

# **Sit in Motion (5-10 Steps). Face Away. Call to Heel/Side.**



# **Down in Motion (5-10 Steps). Face Away. Call to Heel/Side.**



# **Stand in Motion (5-10 Steps). Face Away. Call to Heel/Side.**



# Rear Cross Transition



# Serpentine

# Switch

# (5 Cones)



# Serpentine

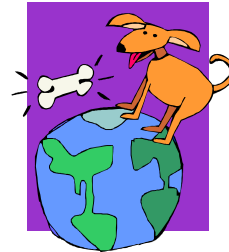
## (3 Jumps)



# **Stop. Leave Dog. Call Dog Over 3 Jumps.**



**Stop. Send Dog  
Over 3 Jumps.  
Dog Waits.**





# Retrieve Over 3 Jumps



# Directed Jumping (2 Jumps)



# Stop. Side Pass

## 3 Steps

## Each Direction



# **Stop. Tandem Turns (360°) Same Direction**



# **Stop. Tandem Turns (360°) Opposite Direction**



# Moving Tandem

## Turns (360°)

## Same Direction



# Moving Tandem

## Turns (360°)

### Opposite Direction



# **Stop. Single Weave to Front. Tandem Turns.**





# Transition with Single Reverse Weave



# **Stop (Stand). Back Up 7 Steps**



# **Stop (Stand). Back Around Handler.**



# Long Call Front

**Dog 360° CW &  
CCW**

**(6-10+ Steps)**



# Long Call Front Tandem Turns (6-10+ Steps)



# Transition

# Cloverleaf

## (Figure 8, Figure 8)



# Distance Figure 8

## (Single Jump)



# Distance Figure 8

## (Two Jumps)





**Sit. Stand. Down.**  
**Handler Steps Over.**  
**(Repeat)**

