

Cyber Rally-O Level III – Course 1T

In the list below, the sign number is next to each sign so you can find it easily if you keep your signs in numerical order.

This ring size is just a sample. Yours may be larger or smaller. The choice is yours. This course can fit in a narrow area.

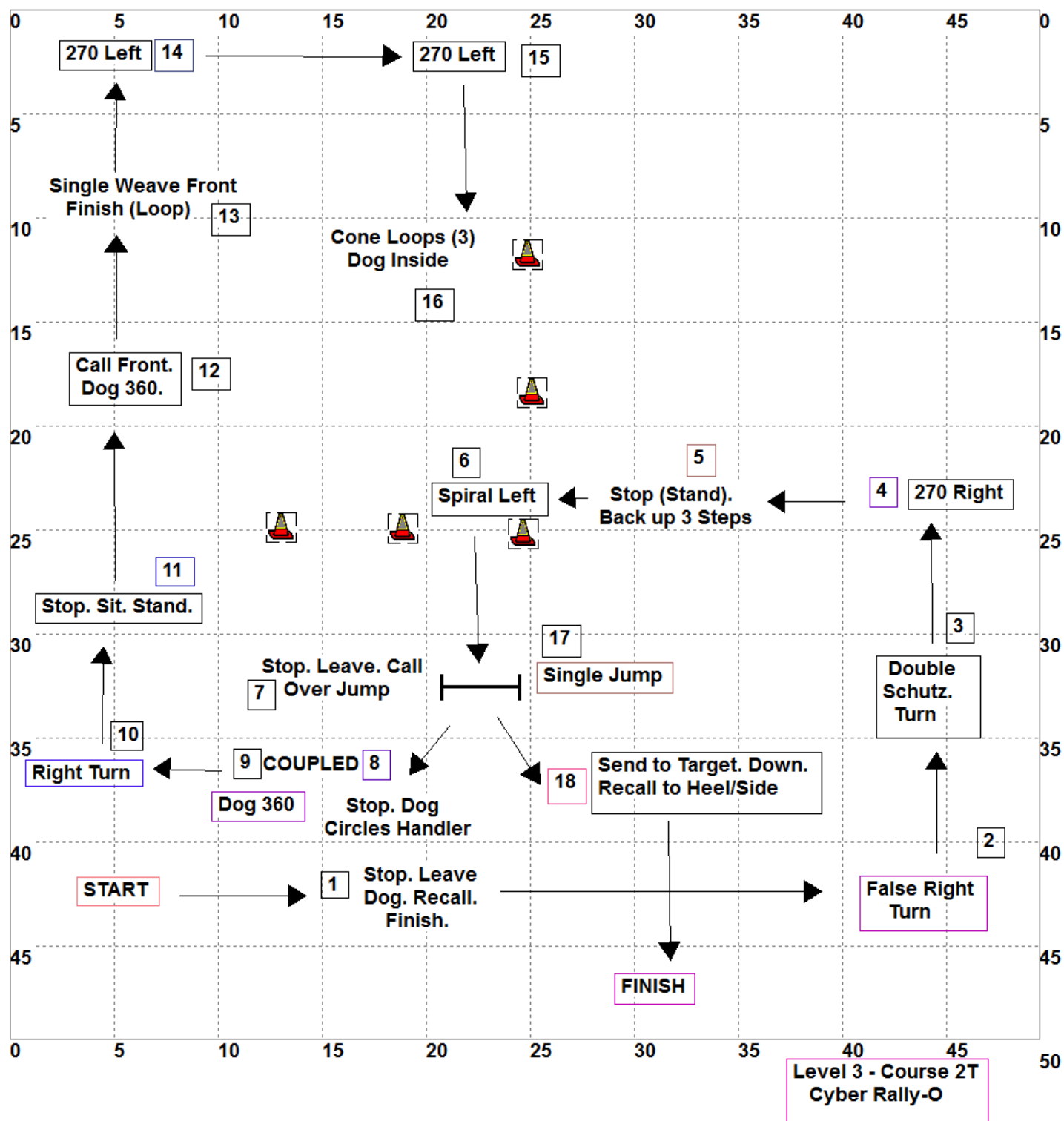
When stations are “coupled” or combined, the end of the first sign is the beginning of the second sign. On this course, stations 9, 10, and 11 are coupled and so are 15 and 16. They are done in the same spot. **When setting the course, the coupled signs are set side by side.**

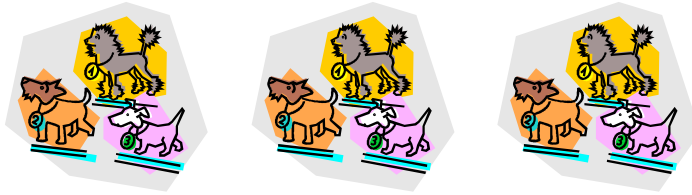
Any questions or problems, just ask. If anything on this course is inaccurate, please let me know.

Thanks! Have fun!
Jude

- | | | |
|--|------------|------------|
| START | (L1-1) | |
| 1. Stop. Figure 8 Leg Weave | | (L3-10) |
| 2. Triple About Turn. Dog Outside | | (L3-14) |
| 3. 270 Left | (L1-13/14) | |
| 4. Pivot Right 90 | | (L3-1) |
| 5. Stop. Single Weave to Front. Finish (Circle). Wait. | | (L3-11) |
| 6. 450 Right (360 Right + Right Turn) | (L1-42) | |
| 7. Call Front. Single Weave Finish. Wait. | | (L2-26) |
| 8. 270 Right | (L1-11/12) | |
| 9. Stop. 360 in Place. Dog Outside | | (L2-15) |
| 10. Stop. Sit. Down. Walk Around | | (L2-14) |
| 11. Pivot Left 90 | | (L3-2) |
| 12. Single Jump | | (L2- 9/10) |
| 13. Pivot Left 180 | | (L3-4) |
| 14. Fast | (L1-30) | |
| 15. Call Front. Handler Finishes to Heel/Side | (L1-40) | |
| 16. Stop. Send to Target. Down. Recall to Heel/Side. | | (L2-23) |
| 17. Cone Loops (6) Alternating | | (L3-21) |
| 18. False Right Turn (Right Turn, Come Fore,
Handler Switches to Heel/Side) | | (L2-24) |

FINISH (L1-2)





Cyber Rally-O Level III – Course 2T

In the list below, the sign number is next to each sign so you can find it easily if you keep your signs in numerical order.

This ring size is just a sample. Yours may be larger or smaller. The choice is yours. This course can fit in a narrow area.

When stations are “coupled” or combined, the end of the first sign is the beginning of the second sign. On this course, stations 8 and 9 are coupled. They are done in the same spot. **When setting the course, the coupled signs are set side by side.**

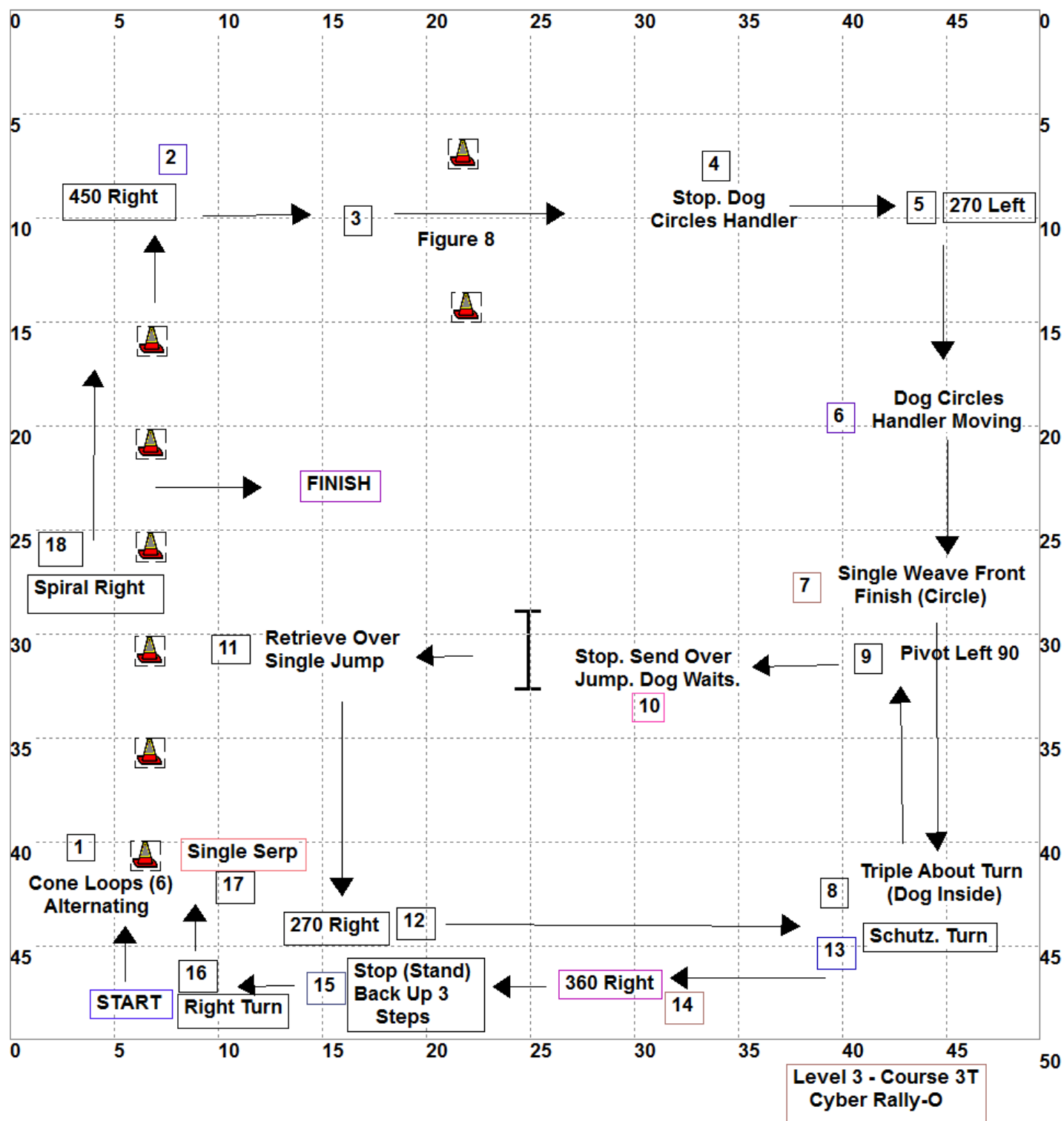
Any questions or problems, just ask. If anything on this course is inaccurate, please let me know.

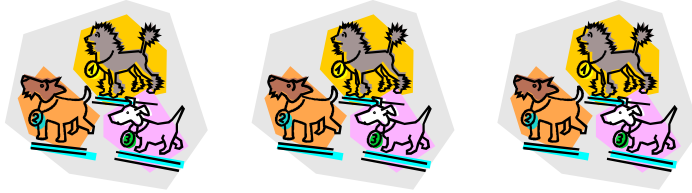
Thanks! Have fun!
Jude

START (L1-1)

1. Stop. Leave Dog (5-10 steps). Face Dog. Recall. Finish. (L3-6)
2. False Right Turn (Right Turn, Come Fore,
Handler Switches to Heel/Side) (L2-24)
3. Double Schutzhund Turn (L1-41)
4. 270 Right (L1-11/12)
5. Stop (Stand). Back up 3 Steps (L3-5)
6. Spiral Left (L1-34)
7. Stop. Leave Dog. Call Dog Over Jump. (L3-16)
8. Stop. Dog Circles Handler (L3-8)
9. Dog 360 (L2-19)
10. Right Turn (L1-3/4)
11. Stop. Sit. Stand. (L2-13)
12. Call Front. Dog 360 (L2-20)
13. Stop. Single Weave to Front. Finish (Loop). Wait. (L3-12)
14. 270 Left (L1-13/14)
15. 270 Left (L1-13/14)
16. Cone Loops (3) Dog Inside (L3-20)
17. Single Jump (L2- 9/10)
18. Stop. Send to Target. Down. Recall to Heel/Side. (L2-23)

FINISH (L1-2)





Cyber Rally-O Level III – Course 3T

In the list below, the sign number is next to each sign so you can find it easily if you keep your signs in numerical order.

This ring size is just a sample. Yours may be larger or smaller. The choice is yours. This course can fit in a narrow area.

When stations are “coupled” or combined, the end of the first sign is the beginning of the second sign. There are no coupled stations on this course.

NOTE: The Cone Loop station involves 6 cones. The Single Serpentine only involves 4 cones; and the Spiral involves the last 3 cones.

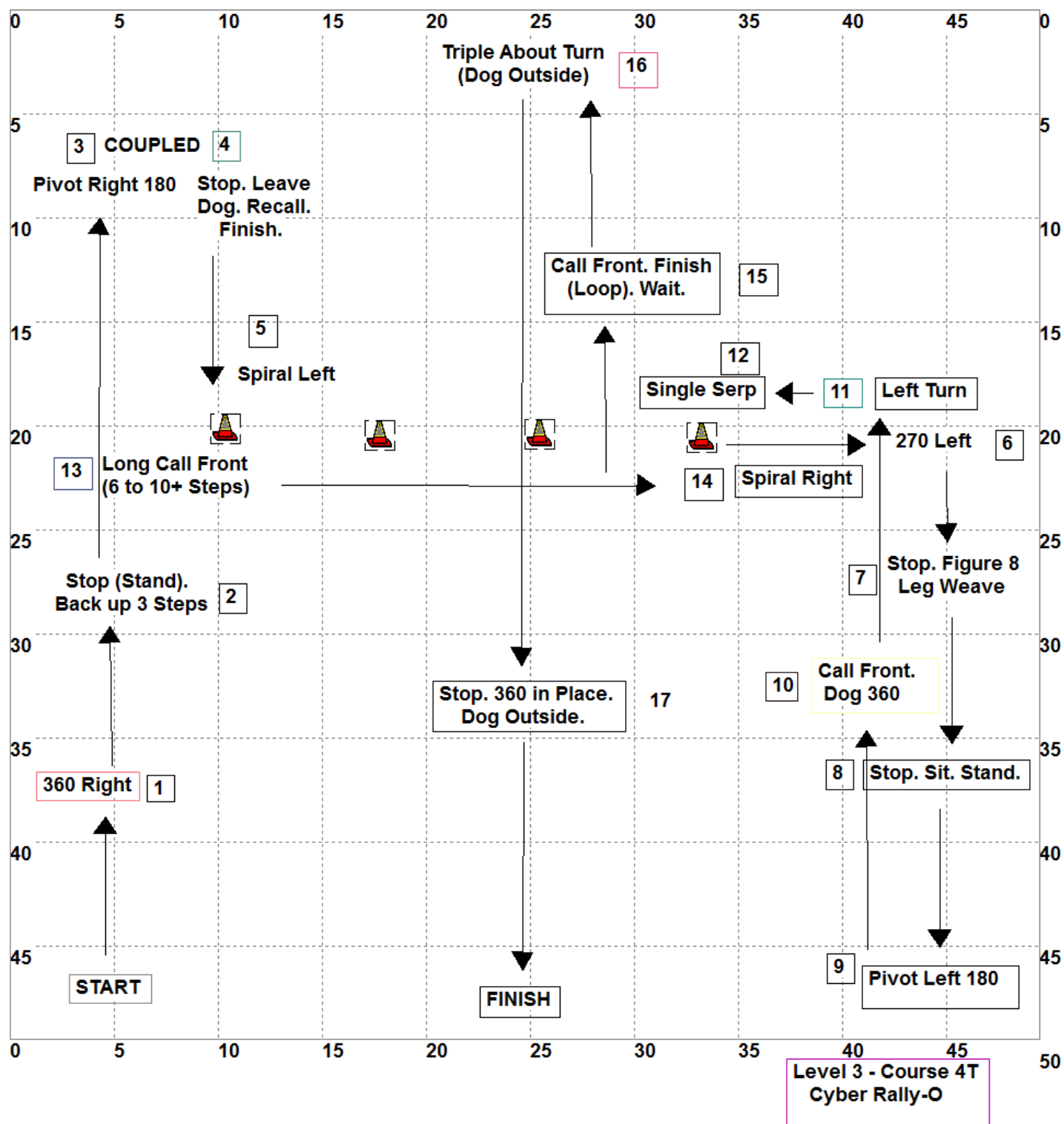
Any questions or problems, just ask. If anything on this course is inaccurate, please let me know.

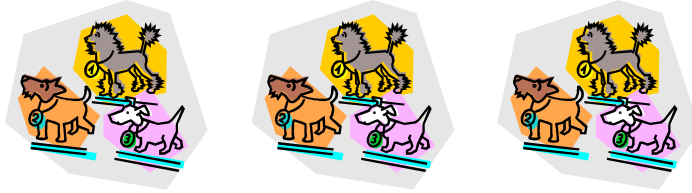
Thanks! Have fun!
Jude

START (L1-1)

- | | | |
|--|------------|---------|
| 1. Cone Loops (6) Alternating | | (L3-21) |
| 2. 450 Right (360 Right + Right Turn) | (L1-42) | |
| 3. Figure 8 | (L2-16) | |
| 4. Stop. Dog Circles Handler | | (L3-8) |
| 5. 270 Left | (L1-13/14) | |
| 6. Dog Circles Handler While Moving | | (L3-9) |
| 7. Stop. Single Weave to Front. Finish (Circle). Wait. | | (L3-11) |
| 8. Triple About Turn (Dog Inside) | | (L3-15) |
| 9. Pivot Left 90 | | (L3-2) |
| 10. Stop. Send Over Jump. Dog Waits. | | (L3-17) |
| 11. Retrieve Over Single Jump | | (L3-18) |
| 12. 270 Right | (L1-11/12) | |
| 13. Schutzhund Turn | (L1-17/18) | |
| 14. 360 Right | (L1-15) | |
| 15. Stop (Stand). Back Up 3 Steps | | (L3-5) |
| 16. Right Turn | (L1-3/4) | |
| 17. Single Serpentine | (L1-35) | |
| 18. Spiral Right | (L1-33) | |

FINISH (L1-2)





Cyber Rally-O Level III – Course 4T

In the list below, the sign number is next to each sign so you can find it easily if you keep your signs in numerical order.

This ring size is just a sample. Yours may be larger or smaller. The choice is yours. This course can fit in a narrow area.

When stations are “coupled” or combined, the end of the first sign is the beginning of the second sign. **Stations 3 and 4 are coupled on this course.**

NOTE: The Spiral Left (Station 5) and the Spiral Right (Station 14) involve only 3 cones each. The Single Serpentine (Station 12) involves 4 cones.

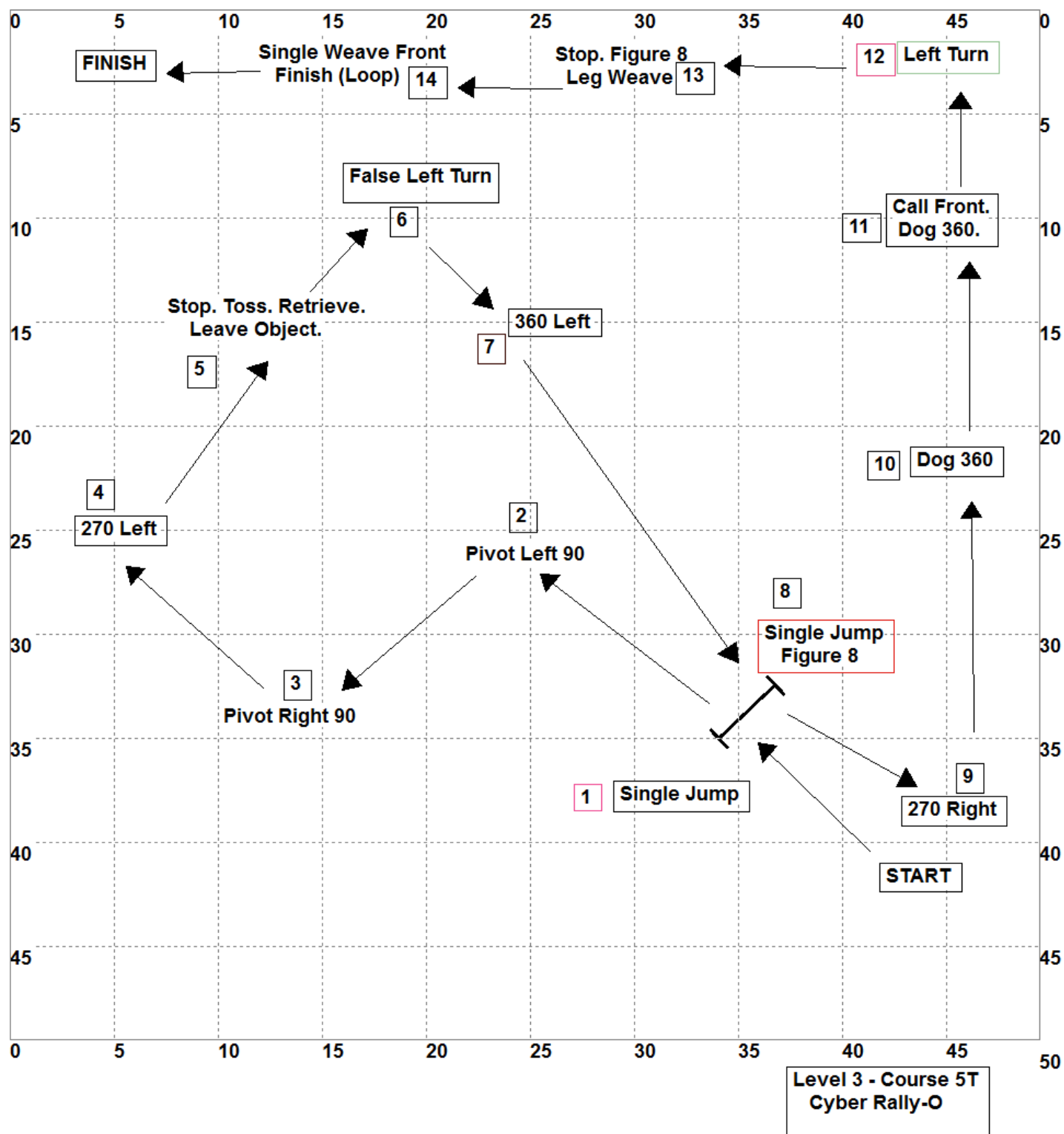
Any questions or problems, just ask. If anything on this course is inaccurate, please let me know.

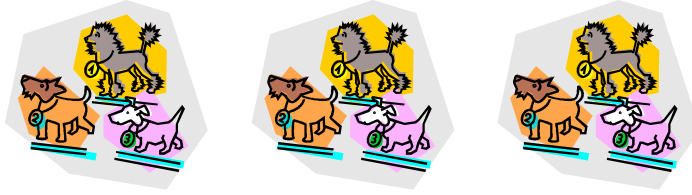
Thanks! Have fun!
Jude

START (L1-1)

- | | | |
|--|------------|---------|
| 1. 360 Right | (L1-15) | |
| 2. Stop (Stand). Back up 3 Steps. | | (L3-5) |
| 3. Pivot Right 180 | | (L3-3) |
| 4. Stop. Leave Dog (5-10 Steps). Face Dog. Recall. Finish. | | (L3-6) |
| 5. Spiral Left | (L1-34) | |
| 6. 270 Left | (L1-13/14) | |
| 7. Stop. Figure 8 Leg Weave. | | (L3-10) |
| 8. Stop. Sit. Stand. | (L2-13) | |
| 9. Pivot Left 180 | | (L3-4) |
| 10. Call Front. Dog 360 | (L2-20) | |
| 11. Left Turn | (L1-5/6) | |
| 12. Single Serpentine | (L1-35) | |
| 13. Long Call Front (6 to 10+ Steps) | | (L3-22) |
| 14. Spiral Right | (L1-33) | |
| 15. Call Front. Finish (Loop). Wait. (L1-26) | | |
| 16. Triple About Turn (Dog Outside) | | (L3-14) |
| 17. Stop. 360 in Place. Dog Outside. | (L2-15) | |

FINISH (L1-2)





Cyber Rally-O Level III – Course 5T

In the list below, the sign number is next to each sign so you can find it easily if you keep your signs in numerical order.

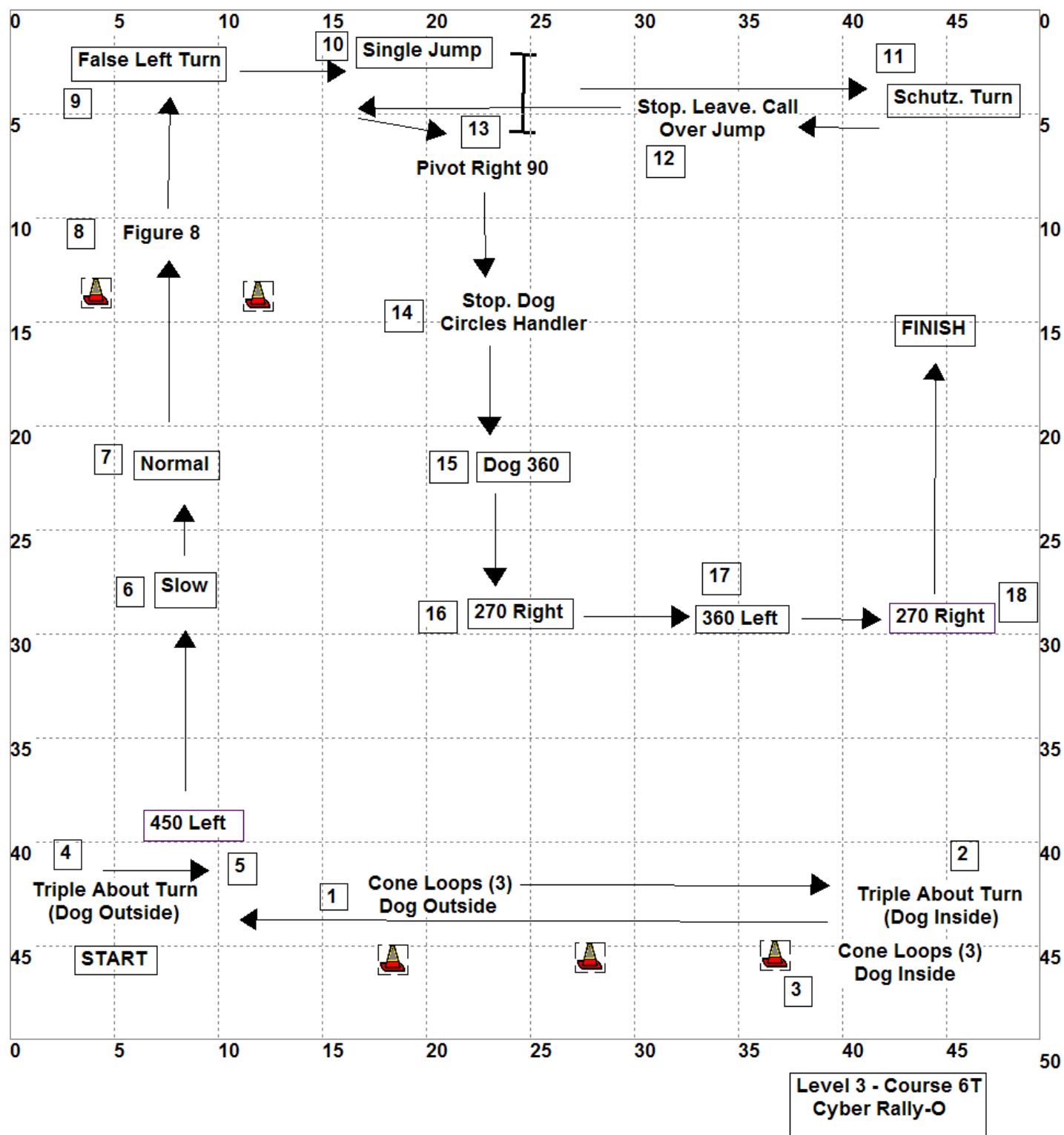
This ring size is just a sample. Yours may be larger or smaller. The choice is yours. This course can fit in a narrow area.

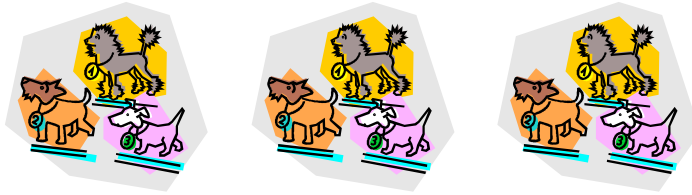
When stations are “coupled” or combined, the end of the first sign is the beginning of the second sign. There are no coupled signs on this course.

Any questions or problems, just ask. If anything on this course is inaccurate, please let me know.

Thanks! Have fun!
Jude

- | | | | |
|---|------------|-----------|---------|
| START | (L1-1) | | |
| 1. Single Jump | | (L2-9/10) | |
| 2. Pivot Left 90 | | | (L3-2) |
| 3. Pivot Right 90 | | | (L3-1) |
| 4. 270 Left | (L1-13/14) | | |
| 5. Stop. Toss. Dog Retrieves. Leave Object. | | | (L3-13) |
| 6. False Left Turn (Left Turn, Come Fore,
Handler Switches to Heel/Side) | | (L2-25) | |
| 7. 360 Left | (L1-16) | | |
| 8. Single Jump Figure 8 | | (L2-21) | |
| 9. 270 Right | (L1-11/12) | | |
| 10. Dog 360 | | (L2-19) | |
| 11. Call Front. Dog 360 | | (L2-20) | |
| 12. Left Turn | (L1-5/6) | | |
| 13. Stop. Figure 8 Leg Weave. | | | (L3-10) |
| 14. Stop. Single Weave to Front. Finish (Loop). Wait. | | | (L3-12) |
| FINISH | (L1-2) | | |





Cyber Rally-O Level III – Course 6T

In the list below, the sign number is next to each sign so you can find it easily if you keep your signs in numerical order.

This ring size is just a sample. Yours may be larger or smaller. The choice is yours. This course can fit in a narrow area.

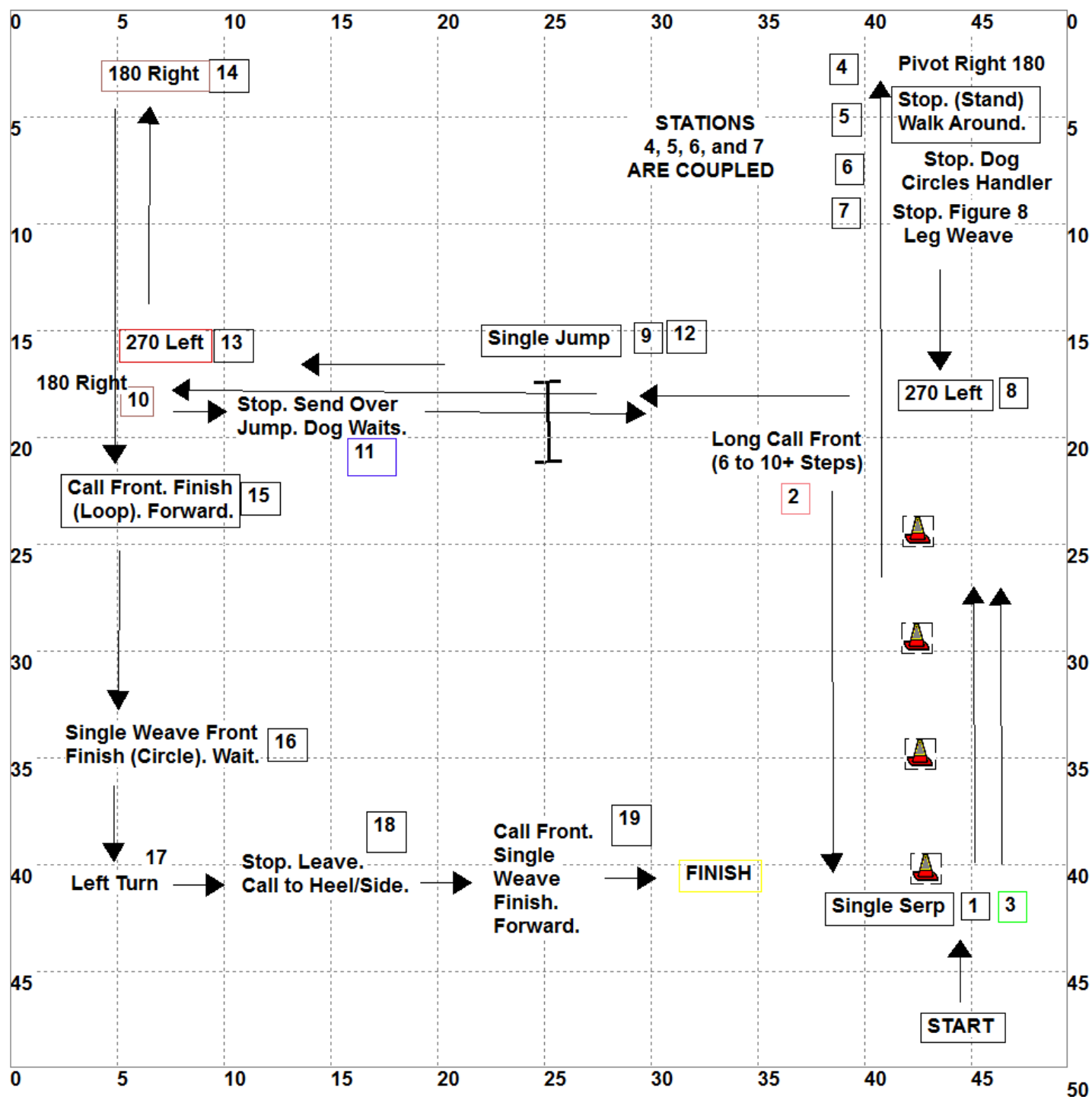
When stations are “coupled” or combined, the end of the first sign is the beginning of the second sign. There are no coupled signs on this course.

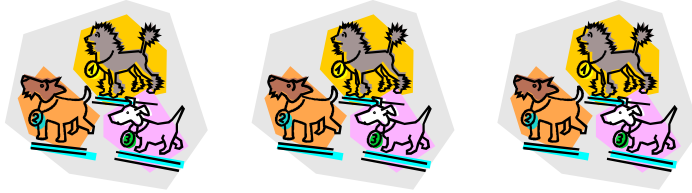
Any questions or problems, just ask. If anything on this course is inaccurate, please let me know.

Thanks! Have fun!
Jude

- | | | |
|---|------------|---------|
| START | (L1-1) | |
| 1. Cone Loops (3) Dog Outside | | (L3-19) |
| 2. Triple About Turn (Dog Inside) | | (L3-15) |
| 3. Cone Loops (3) Dog Inside | | (L3-20) |
| 4. Triple About Turn (Dog Outside) | | (L3-14) |
| 5. 450 Left | (L1-43) | |
| 6. Slow | (L1-29) | |
| 7. Normal | (L1-31/32) | |
| 8. Figure 8 | (L2-16) | |
| 9. False Left Turn (Left Turn, Come Fore,
Handler Switches to Heel/Side) | (L2-25) | |
| 10. Single Jump | (L2-9/10) | |
| 11. Schutzhund Turn | (L1-17/18) | |
| 12. Stop. Leave Dog. Call Dog Over Jump | | (L3-16) |
| 13. Pivot Right 90 | | (L3-1) |
| 14. Stop. Dog Circles Handler | | (L3-8) |
| 15. Dog 360 | (L2-19) | |
| 16. 270 Right | (L1-11/12) | |
| 17. 360 Left | (L1-16) | |
| 18. 270 Right | (L1-11/12) | |

FINISH (L1-2)





Cyber Rally-O Level III – Course 7T

In the list below, the sign number is next to each sign so you can find it easily if you keep your signs in numerical order.

This ring size is just a sample. Yours may be larger or smaller. The choice is yours.

When stations are “coupled” or combined, the end of the first sign is the beginning of the second sign. **Stations 4, 5, 6, and 7 are coupled on this course. They are done in the same place. Remember to pause at all the Stop signs.**

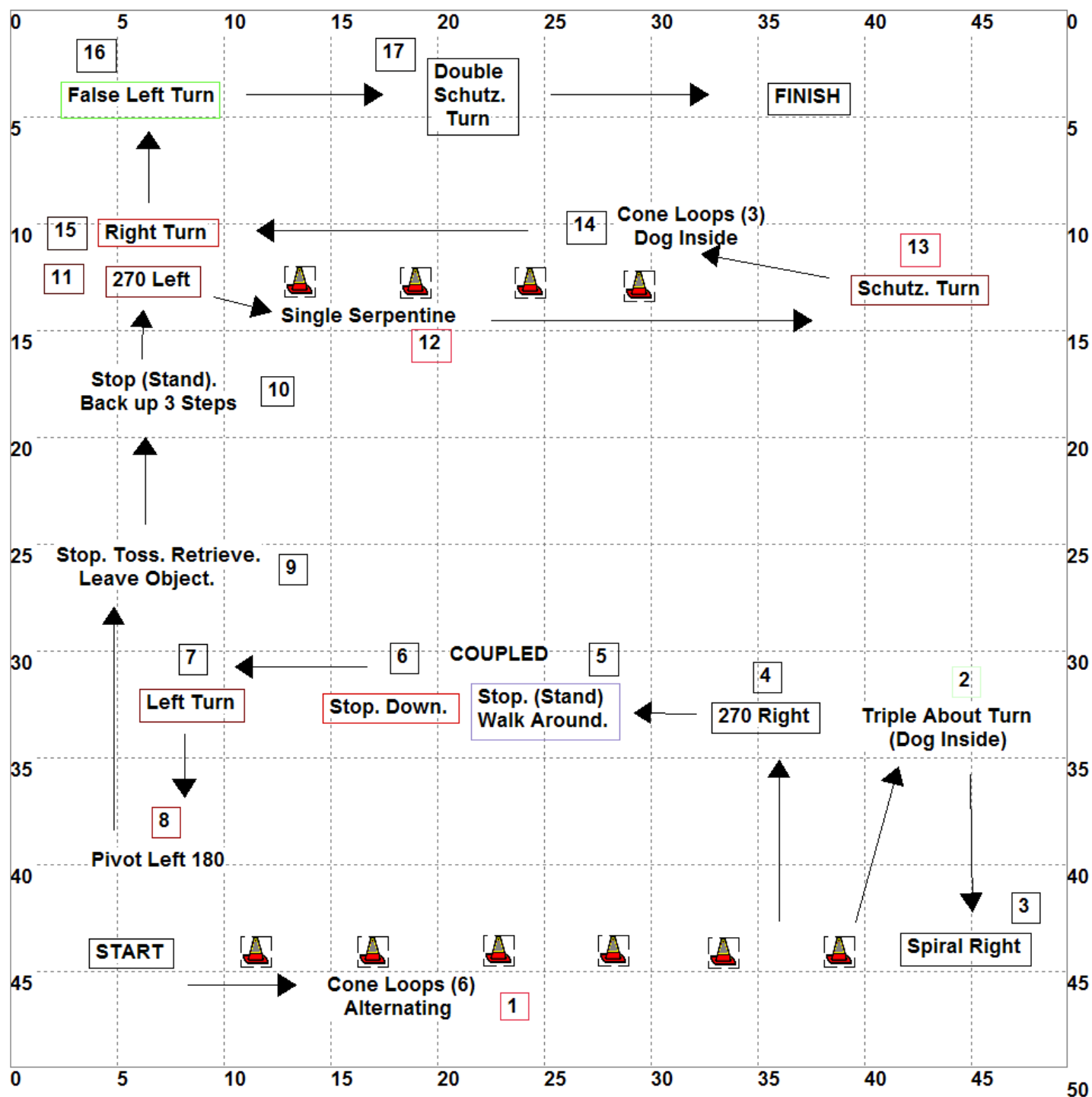
Any questions or problems, just ask. If anything on this course is inaccurate, please let me know.

Thanks! Have fun!
Jude

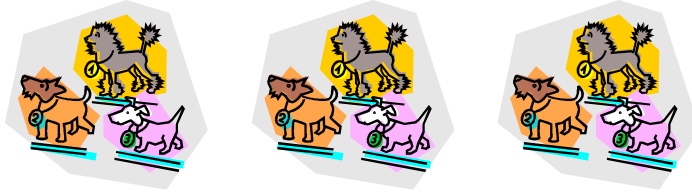
START (L1-1)

1. Single Serpentine (L1-35)
2. Long Call Front (6 to 10+ Steps) (L3-22)
3. Single Serpentine (L1-35)
4. Pivot Right 180 (L3-3)
5. Stop (Stand). Walk Around (L1-24)
6. Stop. Dog Circles Handler (L3-8)
7. Stop. Figure 8 Leg Weave (L3-10)
8. 270 Left (L1-13/14)
9. Single Jump (L2-9/10)
10. 180 Right (L1-7/8)
11. Stop. Send Over Jump. Dog Waits. (L3-17)
12. Single Jump (L2-9/10)
13. 270 Left (L1-13/14)
14. 180 Right (L1-7/8)
15. Call Front. Finish (Loop). Forward. (L1-28)
16. Stop. Single Weave to Front. Finish (Circle). Wait. (L3-11)
17. Left Turn (L1-5/6)
18. Stop. Leave Dog (3-5 Steps).
Call to Heel/Side. (L1-37)
19. Call Front. Single Weave Finish. Forward. (L2-27)

FINISH (L1-2)



Level 3 - Course 8T
Cyber Rally-O



Cyber Rally-O Level III – Course 8T

In the list below, the sign number is next to each sign so you can find it easily if you keep your signs in numerical order.

This ring size is just a sample. Yours may be larger or smaller. The choice is yours. This course can fit in a narrow area.

When stations are “coupled” or combined, the end of the first sign is the beginning of the second sign. **Stations 5 and 6 are coupled on this course.**

NOTE: The Alternating Cone Loops (Station 1) involves 6 cones. The Spiral Right (Station 3) involves only 3 cones. The Serpentine (Station 12) uses 4 and the Cone Loops (Station 14) only 3.

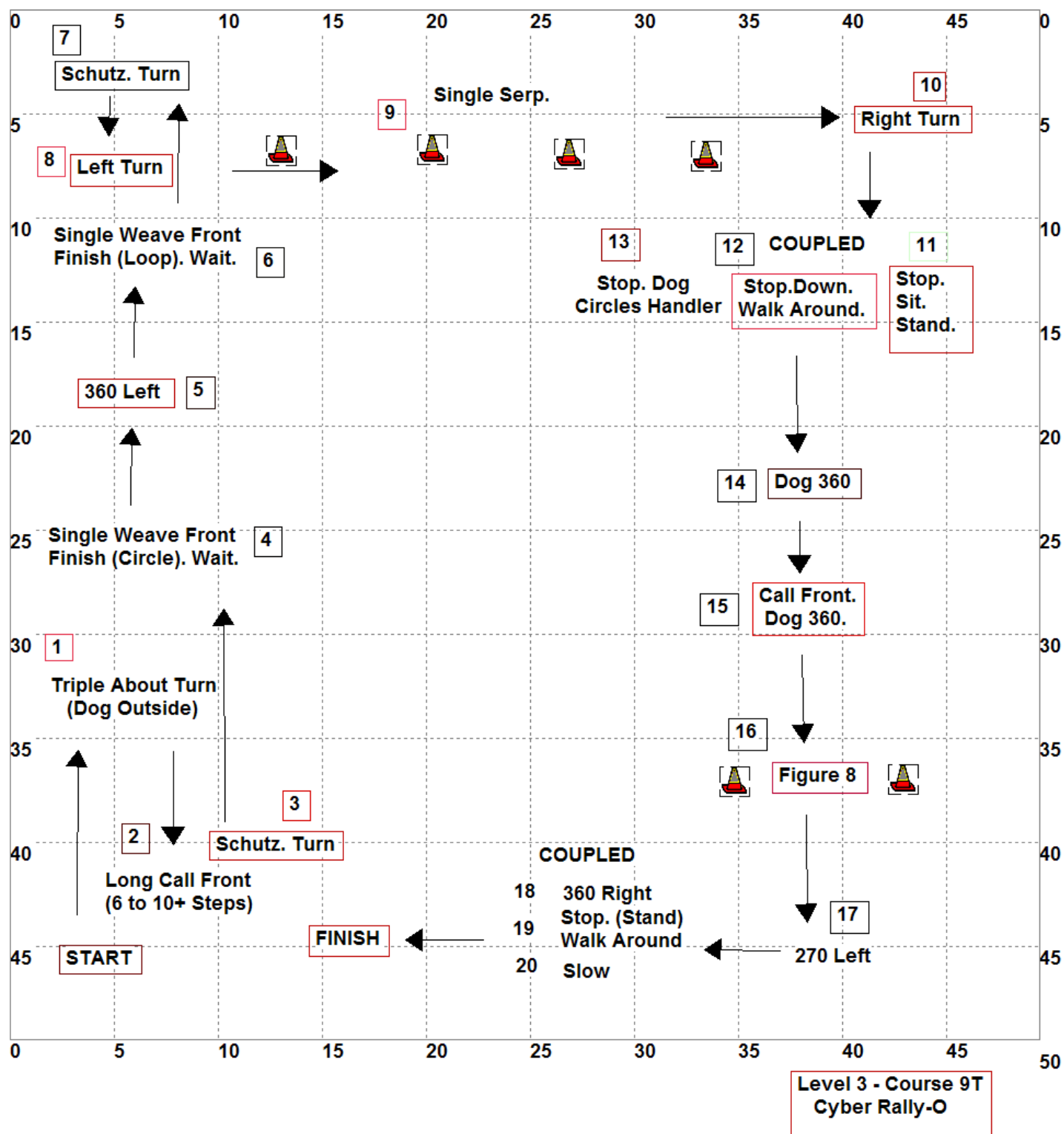
Any questions or problems, just ask. If anything on this course is inaccurate, please let me know. Thanks! Have fun!

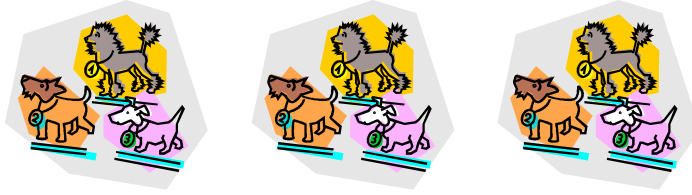
Jude

START (L1-1)

- | | |
|---|------------|
| 1. Cone Loops (6) Alternating | (L3-21) |
| 2. Triple About Turn (Dog Inside) | (L3-15) |
| 3. Spiral Right | (L1-33) |
| 4. 270 Right | (L1-11/12) |
| 5. Stop (Stand). Walk Around. | (L1-24) |
| 6. Stop. Down. | (L1-20) |
| 7. Left Turn | (L1-5/6) |
| 8. Pivot Left 180 | (L3-4) |
| 9. Stop. Toss. Dog Retrieves. Leave Object. | (L3-13) |
| 10. Stop (Stand). Back up 3 Steps | (L3-5) |
| 11. 270 Left | (L1-13/14) |
| 12. Single Serpentine | (L1-35) |
| 13. Schutzhund Turn | (L1-17/18) |
| 14. Cone Loops (3) Dog Inside | (L3-20) |
| 15. Right Turn | (L1-3/4) |
| 16. False Left Turn | (L2-25) |
| 17. Double Schutzhund Turn | (L1-41) |

FINISH (L1-2)





Cyber Rally-O Level III – Course 9T

In the list below, the sign number is next to each sign so you can find it easily if you keep your signs in numerical order.

This ring size is just a sample. Yours may be larger or smaller. The choice is yours. This course can fit in a narrow area.

When stations are “coupled” or combined, the end of the first sign is the beginning of the second sign. **Stations 11, 12, and 13 are coupled and so are 18, 19, and 20.**

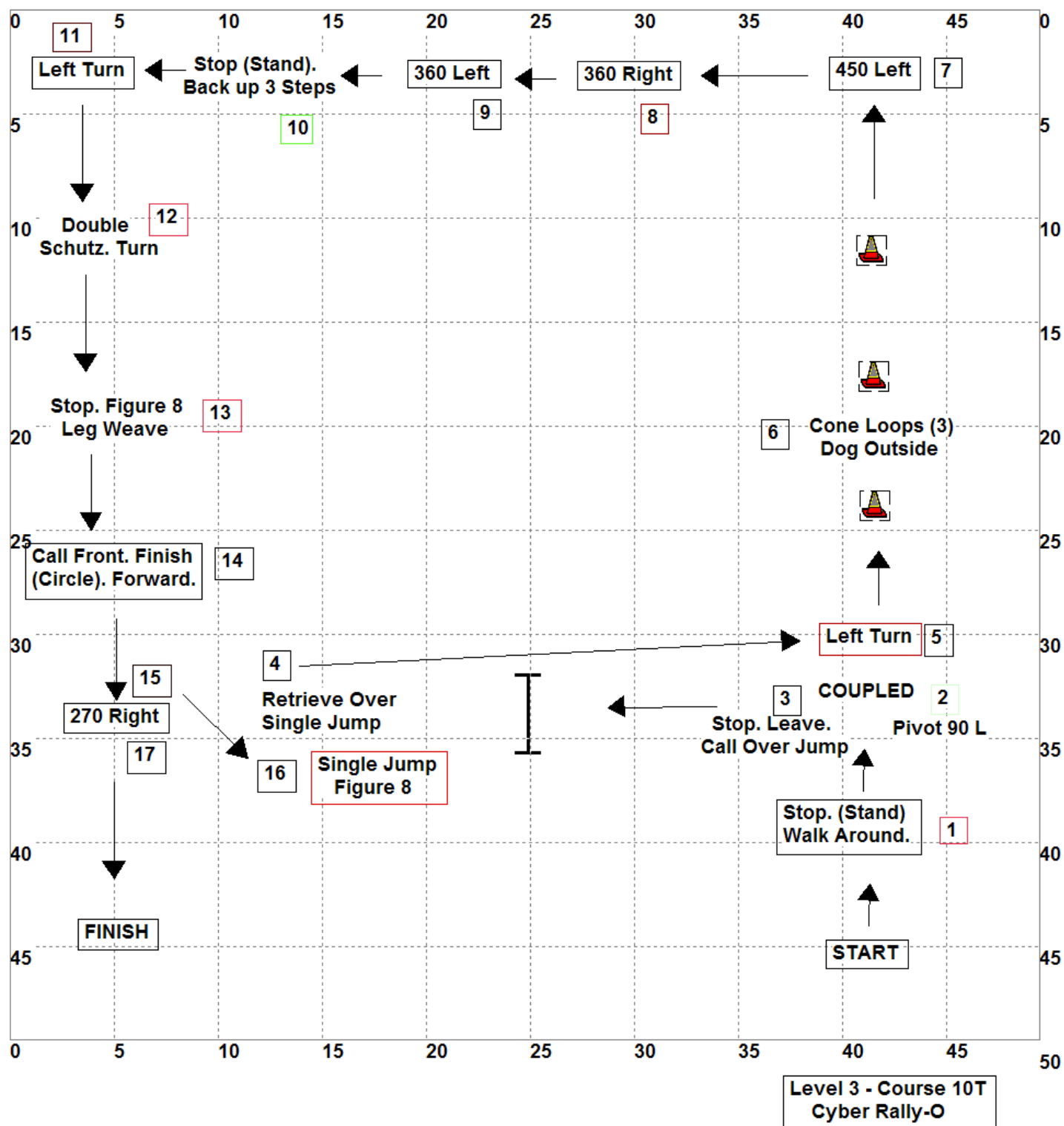
Any questions or problems, just ask. If anything on this course is inaccurate, please let me know.

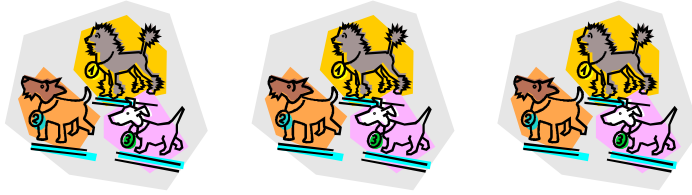
Thanks! Have fun!
Jude

START (L1-1)

- | | |
|--|------------|
| 1. Triple About Turn (Dog Outside) | (L3-14) |
| 2. Long Call Front (6 to 10+ Steps) | (L3-22) |
| 3. Schutzhund Turn | (L1-17/18) |
| 4. Stop. Single Weave to Front. Finish (Circle). Wait. | (L3-11) |
| 5. 360 Left | (L1-16) |
| 6. Stop. Single Weave to Front. Finish (Loop). Wait. | (L3-12) |
| 7. Schutzhund Turn | (L1-17/18) |
| 8. Left Turn | (L1-5/6) |
| 9. Single Serpentine | (L1-35) |
| 10. Right Turn | (L1-3/4) |
| 11. Stop. Sit. Stand. | (L2-13) |
| 12. Stop. Down. Walk Around | (L1-23) |
| 13. Stop. Dog Circles Handler | (L3-8) |
| 14. Dog 360 | (L2-19) |
| 15. Call Front. Dog 360. | (L2-20) |
| 16. Figure 8 | (L2-16) |
| 17. 270 Left | (L1-13/14) |
| 18. 360 Right | (L1-15) |
| 19. Stop (Stand). Walk Around. | (L1-24) |
| 20. Slow | (L1-29) |

FINISH (L1-2)





Cyber Rally-O Level III – Course 10T

In the list below, the sign number is next to each sign so you can find it easily if you keep your signs in numerical order.

This ring size is just a sample. Yours may be larger or smaller. The choice is yours. This course can fit in a narrow area.

When stations are “coupled” or combined, the end of the first sign is the beginning of the second sign. **Stations 2 and 3 are coupled on this course.**

NOTE: You will turn away from (rather than pass by) the Single Jump Figure 8 to move to Station 17.

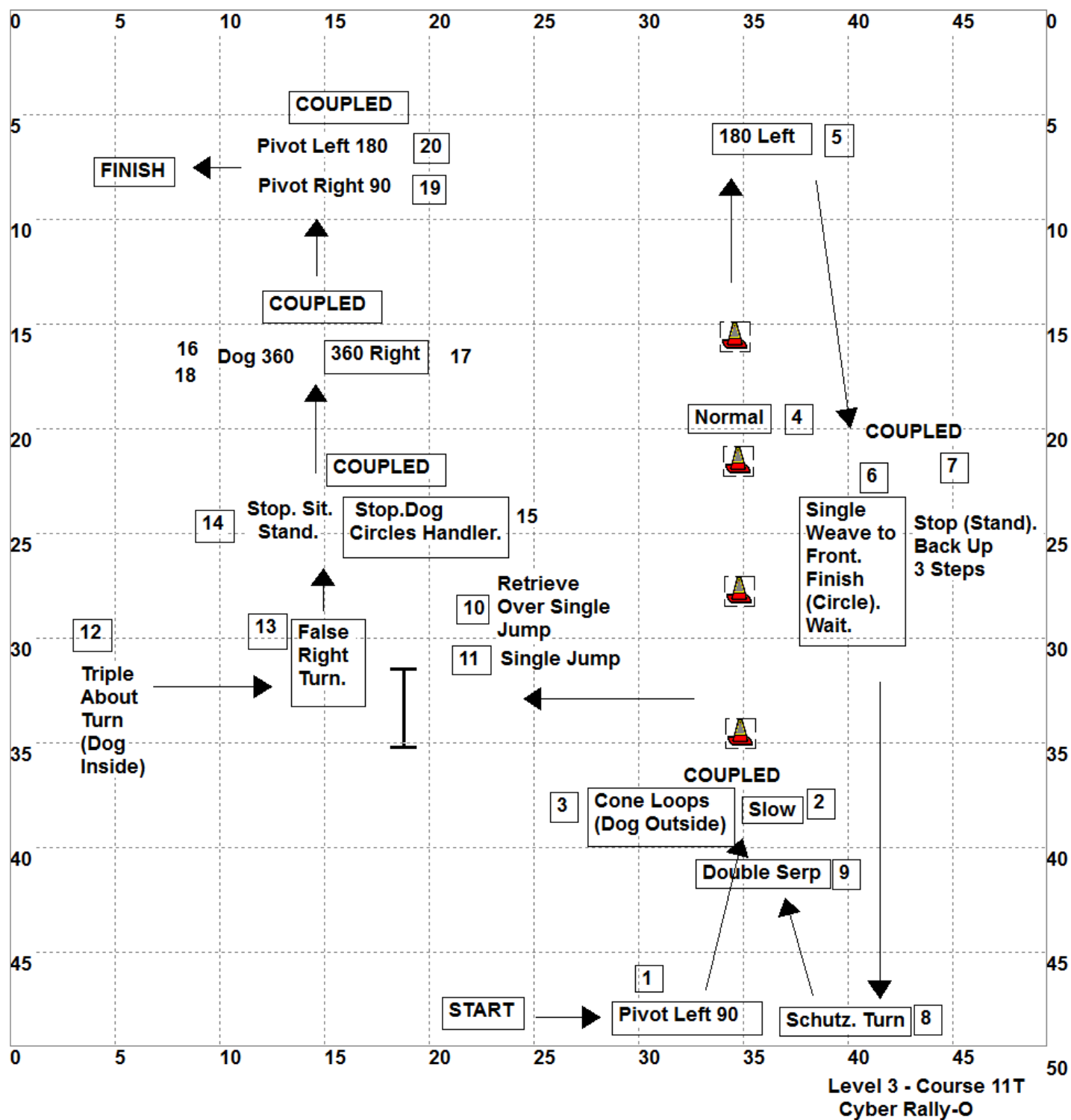
Any questions or problems, just ask. If anything on this course is inaccurate, please let me know.

Thanks! Have fun!
Jude

START (L1-1)

1. Stop (Stand). Walk Around. (L1-24)
2. Pivot Left 90 (L3-2)
3. Stop. Leave Dog. Call Dog Over Jump. (L3-16)
4. Retrieve Over Single Jump (L3-18)
5. Left Turn (L1-5/6)
6. Cone Loops (3) Dog Outside (L3-19)
7. 450 Left (360 Left + Left Turn) (L1-43)
8. 360 Right (L1-15)
9. 360 Left (L1-16)
10. Stop (Stand). Back up 3 Steps (L3-5)
11. Left Turn (L1-5/6)
12. Double Schutzhund Turn (L1-41)
13. Stop. Figure 8 Leg Weave. (L3-10)
14. Call Front. Finish (Circle). Forward. (L1-27)
15. 270 Right (L1-11/12)
16. Single Jump Figure 8 (L2-21)
17. 270 Right (L1-11/12)

FINISH (L1-2)





Cyber Rally-O Level III – Course 11T

In the list below, the sign number is next to each sign so you can find it easily if you keep your signs in numerical order.

This ring size is just a sample. Yours may be larger or smaller. The choice is yours. This course can fit in a narrow area.

When stations are “coupled”, the end of the first sign is the beginning of the second sign. **On this course Stations 2/3, 6/7, 14/15, 16/17/18 and 19/20 are coupled. The Cone Loops are done at Slow pace.** Take note that the Normal sign is at the end of the third cone (end of station). The fourth cone is only for the Double Serpentine.

Any questions or problems, just ask. If anything on this course is inaccurate, please let me know.

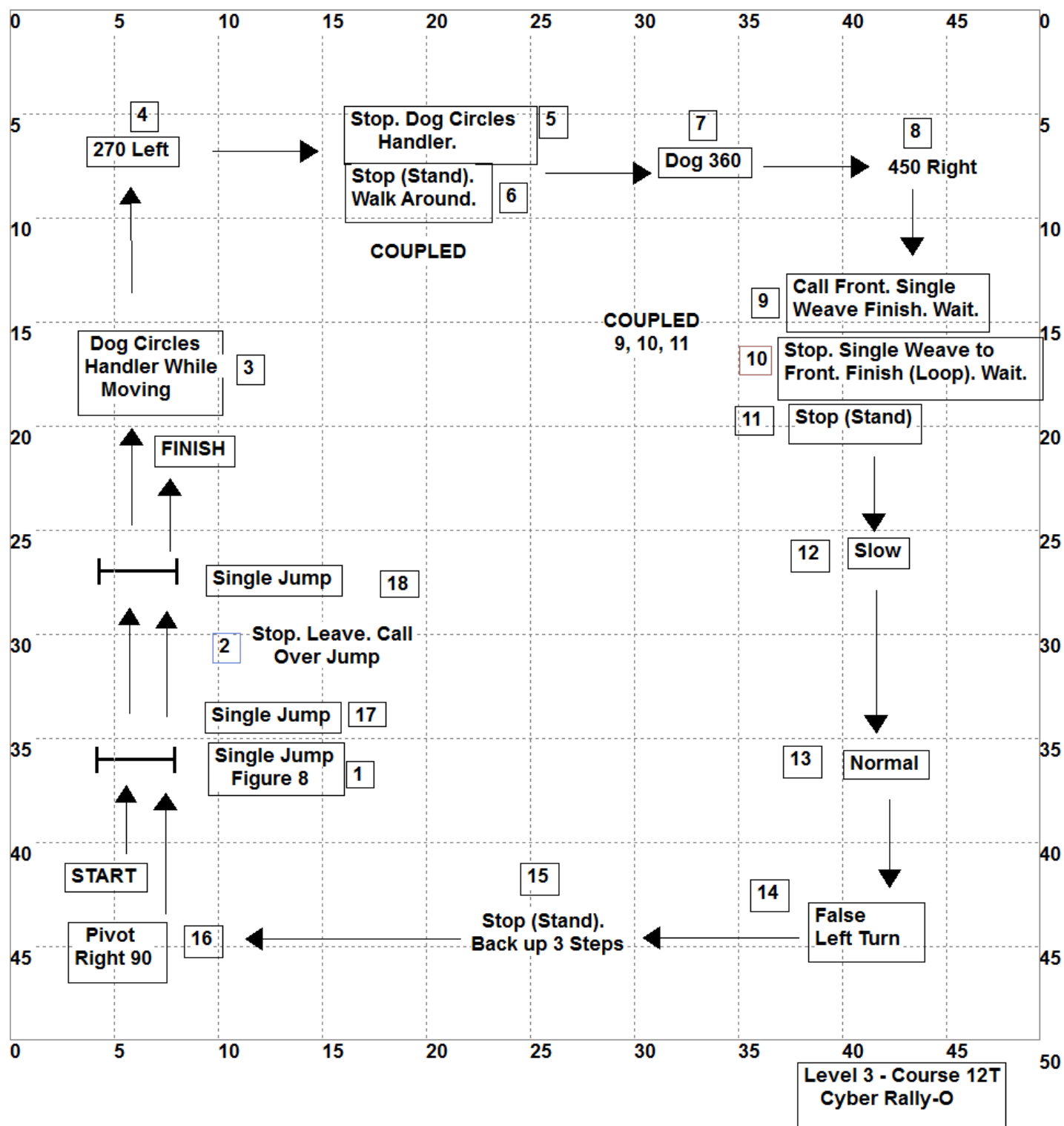
Thanks! Have fun!

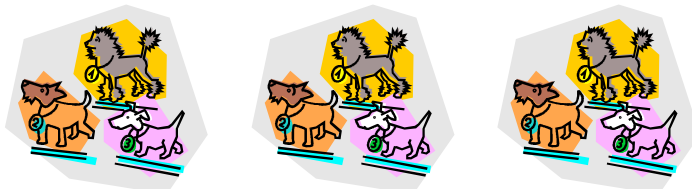
Jude

START (L1-1)

- | | | |
|---|------------|---------|
| 1. Pivot Left 90 | | (L3-2) |
| 2. Slow | (L1-29) | |
| 3. Cone Loops (3) Dog Outside | | (L3-19) |
| 4. Normal | (L1-31/32) | |
| 5. 180 Left | (L1-9/10) | |
| 6. Stop. Single Weave to Front. Finish (Circle). Wait. | | (L3-11) |
| 7. Stop (Stand). Back Up 3 Steps | | (L3-5) |
| 8. Schutzhund Turn | (L1-17/18) | |
| 9. Double Serpentine | (L1-36) | |
| 10. Retrieve Over Single Jump | | (L3-18) |
| 11. Single Jump | (L2-9/10) | |
| 12. Triple About Turn (Dog Inside) | | (L3-15) |
| 13. False Right Turn (Right Turn, Come Fore, Handler Switches to Heel/Side) | (L2-24) | |
| 14. Stop. Sit. Stand | (L2-13) | |
| 15. Stop. Dog Circles Handler. | | (L3-8) |
| 16. Dog 360 | (L2-19) | |
| 17. 360 Right | (L1-15) | |
| 18. Dog 360 | (L2-19) | |
| 19. Pivot Right 90 | | (L3-1) |
| 20. Pivot Left 180 | | (L3-4) |

FINISH (L1-2)





Cyber Rally-O Level III – Course 12T

In the list below, the sign number is next to each sign so you can find it easily if you keep your signs in numerical order.

This ring size is just a sample. Yours may be larger or smaller. The choice is yours. This course can fit in a narrow area.

When stations are “coupled”, the end of the first sign is the beginning of the second sign. **On this course Stations 5-6 and Stations 9-11 are coupled.**

Any questions or problems, just ask. If anything on this course is inaccurate, please let me know.

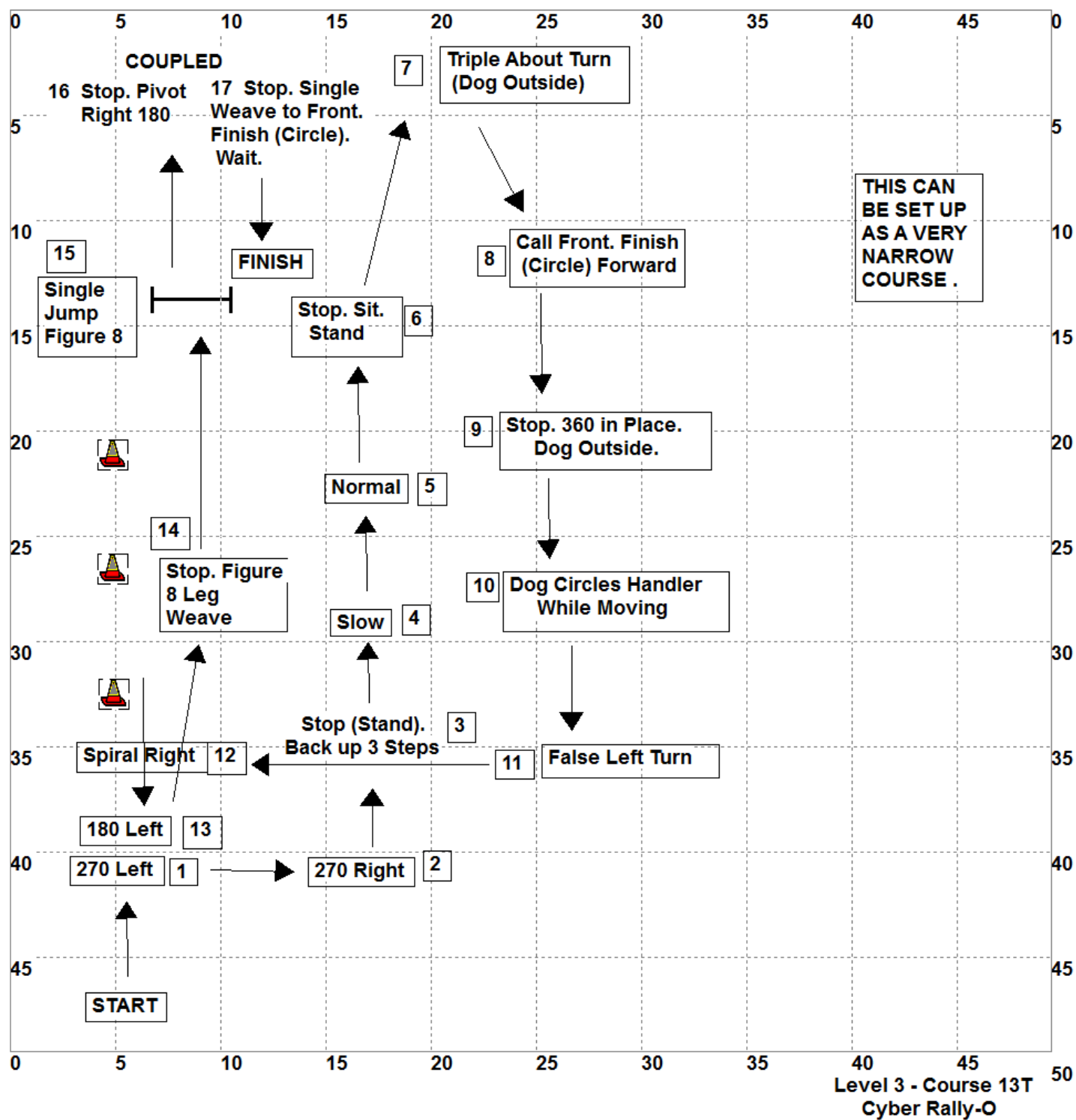
Thanks! Have fun!

Jude

START (L1-1)

- | | | |
|--|------------|---------|
| 1. Single Jump Figure 8 | (L2-21) | |
| 2. Stop. Leave Dog. Call Dog Over Jump. | | (L3-16) |
| 3. Dog Circles Handler While Moving | | (L3-9) |
| 4. 270 Left | (L1-13/14) | |
| 5. Stop. Dog Circles Handler. | | (L3-8) |
| 6. Stop (Stand). Walk Around. | (L1-24) | |
| 7. Dog 360 | (L2-19) | |
| 8. 450 Right (360 Right + Right Turn) | (L1-42) | |
| 9. Call Front. Single Weave Finish. Wait. | (L2-26) | |
| 10. Stop. Single Weave to Front. Finish (Loop). Wait. | | (L3-12) |
| 11. Stop (Stand). | (L1-44) | |
| 12. Slow | (L1-29) | |
| 13. Normal | (L1-31/32) | |
| 14. False Left Turn (Left Turn, Come Fore,
Handler Resumes Heel/Side) | (L2-25) | |
| 15. Stop (Stand). Back Up 3 Steps | | (L3-5) |
| 16. Pivot Right 90 | | (L3-1) |
| 17. Single Jump | (L2-9/10) | |
| 18. Single Jump | (L2-9/10) | |

FINISH (L1-2)





Cyber Rally-O Level III – Course 13T

In the list below, the sign number is next to each sign so you can find it easily if you keep your signs in numerical order.

This ring size is just a sample. Yours may be larger or smaller. The choice is yours. This course can fit in a narrow area.

When stations are “coupled”, the end of the first sign is the beginning of the second sign. **On this course Stations 16 and Stations 17 are coupled.**

Any questions or problems, just ask. If anything on this course is inaccurate, please let me know.

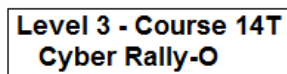
Thanks! Have fun!

Jude

START (L1-1)

- | | | |
|---|------------|---------|
| 1. 270 Left | (L1-13/14) | |
| 2. 270 Right | (L1-11/12) | |
| 3. Stop (Stand). Back up 3 Steps | | (L3-5) |
| 4. Slow | (L1-29) | |
| 5. Normal | (L1-31/32) | |
| 6. Stop. Sit. Stand | (L2-13) | |
| 7. Triple About Turn (Dog Outside) | | (L3-14) |
| 8. Call Front. Finish (Circle). Forward. (L1-27) | | |
| 9. Stop. 360 in Place. Dog Outside. | (L2-15) | |
| 10. Dog Circles Handler While Moving | | (L3-9) |
| 11. False Left Turn | (L2-25) | |
| 12. Spiral Right | (L1-33) | |
| 13. 180 Left | (L1-9/10) | |
| 14. Stop. Figure 8 Leg Weave. | | (L3-10) |
| 15. Single Jump Figure 8 | (L2-21) | |
| 16. Stop. Pivot Right 180 | | (L3-3) |
| 17. Stop. Single Weave to Front. Finish (Circle). Wait. | | (L3-11) |

FINISH (L1-2)





Cyber Rally-O Level III – Course 14T

In the list below, the sign number is next to each sign so you can find it easily if you keep your signs in numerical order.

This ring size is just a sample. Yours may be larger or smaller. The choice is yours.

When stations are “coupled” or combined, the end of the first sign is the beginning of the second sign. **On this course, Stations 7 and 8 are coupled.**

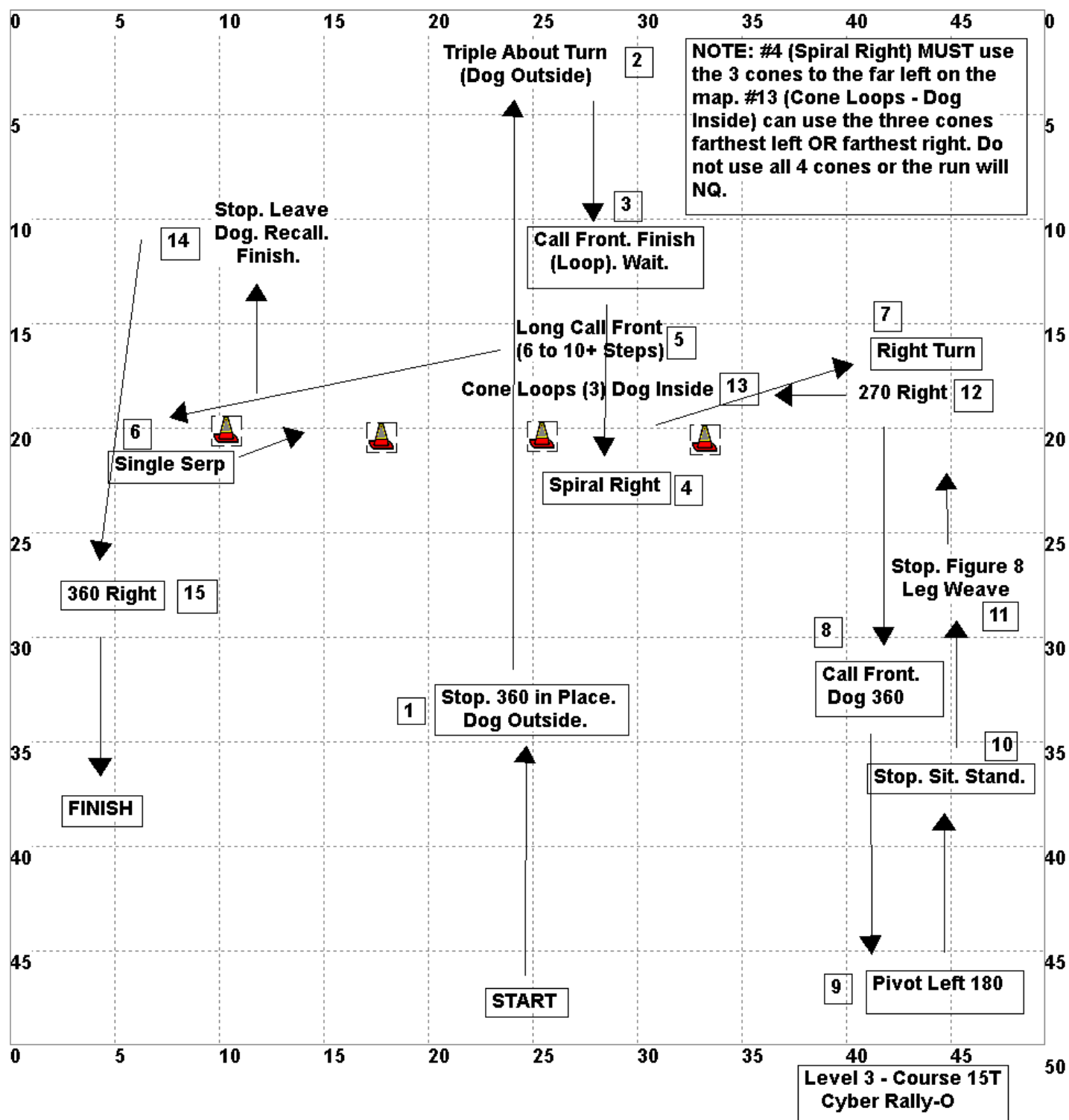
Any questions or problems, just ask. If anything on this course is inaccurate, please let me know.

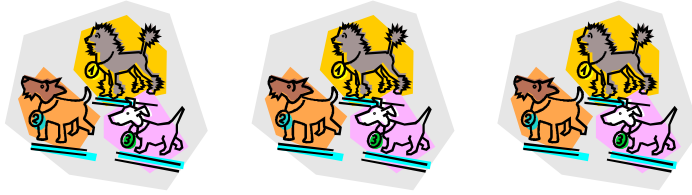
Thanks! Have fun!
Jude

START (L1-1)

- | | |
|--|------------|
| 1. Figure 8 | (L2-16) |
| 2. 360 Left | (L1-16) |
| 3. Long Call Front (6 to 10+ Steps) | (L3-22) |
| 4. Stop. Single Weave to Front. Finish (Loop). Wait. | (L3-12) |
| 5. Long Call Front (6 to 10+ Steps) | (L3-22) |
| 6. Right Turn | (L1-3/4) |
| 7. Pivot Right 90 | (L3-1) |
| 8. Stop. Sit. Down. Walk Around. | (L2-14) |
| 9. 450 Right (360 Right + Right Turn) | (L1-42) |
| 10. 270 Right | (L1-11/12) |
| 11. Single Serpentine | (L1-35) |
| 12. Pivot Left 90 | (L3-2) |
| 13. False Right Turn (Right Turn,
Come Fore, Handler Resumes Heel/Side) | (L2-24) |
| 14. Figure 8 | (L2-16) |
| 15. 270 Left | (L1-13/14) |
| 16. Stop. Dog Circles Handler. | (L3-8) |
| 17. Stop. Single Weave to Front. Finish (Circle). Wait. | (L3-11) |
| 18. Slow | (L1-29) |

FINISH (L1-2)





Cyber Rally-O Level III – Course 15T

In the list below, the sign number is next to each sign so you can find it easily if you keep your signs in numerical order.

This ring size is just a sample. Yours may be larger or smaller. The choice is yours. This course can fit in a narrow area.

When stations are “coupled” or combined, the end of the first sign is the beginning of the second sign. This course has no coupled stations.

NOTE: The Spiral Right (Station 4) and the Cone Loops (Station 13) involve only 3 cones each. The Spiral Right MUST use the 3 cones to the far left on the map. The Cone Loops can use the 3 cones on the far left OR the 3 cones on the far right. The Single Serpentine (Station 6) involves all 4 cones.

Any questions or problems, just ask. If anything on this course is inaccurate, please let me know.

Thanks! Have fun!
Jude

START (L1-1)

- | | | |
|---|------------|---------|
| 1. Stop. 360 in Place. Dog Outside. | (L2-15) | |
| 2. Triple About Turn (Dog Outside) | | (L3-14) |
| 3. Call Front. Finish (Loop). Wait. | (L1-26) | |
| 4. Spiral Right | (L1-33) | |
| 5. Long Call Front (6 to 10+ Steps) | | (L3-22) |
| 6. Single Serpentine | (L1-35) | |
| 7. Right Turn | (L1-3/4) | |
| 8. Call Front. Dog 360 | (L2-20) | |
| 9. Pivot Left 180 | | (L3-4) |
| 10. Stop. Sit. Stand. | (L2-13) | |
| 11. Stop. Figure 8 Leg Weave. | | (L3-10) |
| 12. 270 Right | (L1-11/12) | |
| 13. Cone Loops (3) Dog Inside | | (L3-20) |
| 14. Stop. Leave Dog (5-10 Steps). Face Dog. Recall. Finish. | | (L3-6) |
| 15. 360 Right | (L1-15) | |

FINISH (L1-2)