

Level V - Course 1P  
Cyber Rally-O



Cyber Rally-O  
Level V – Course 1P

In the list below, the sign number is next to each sign so you can find it easily if you keep your signs in numerical order.

This ring size is just a sample. Yours may be larger or smaller. The choice is yours.

When stations are “coupled” or combined, the end of the first sign is the beginning of the second sign. There are no coupled stations on this course.

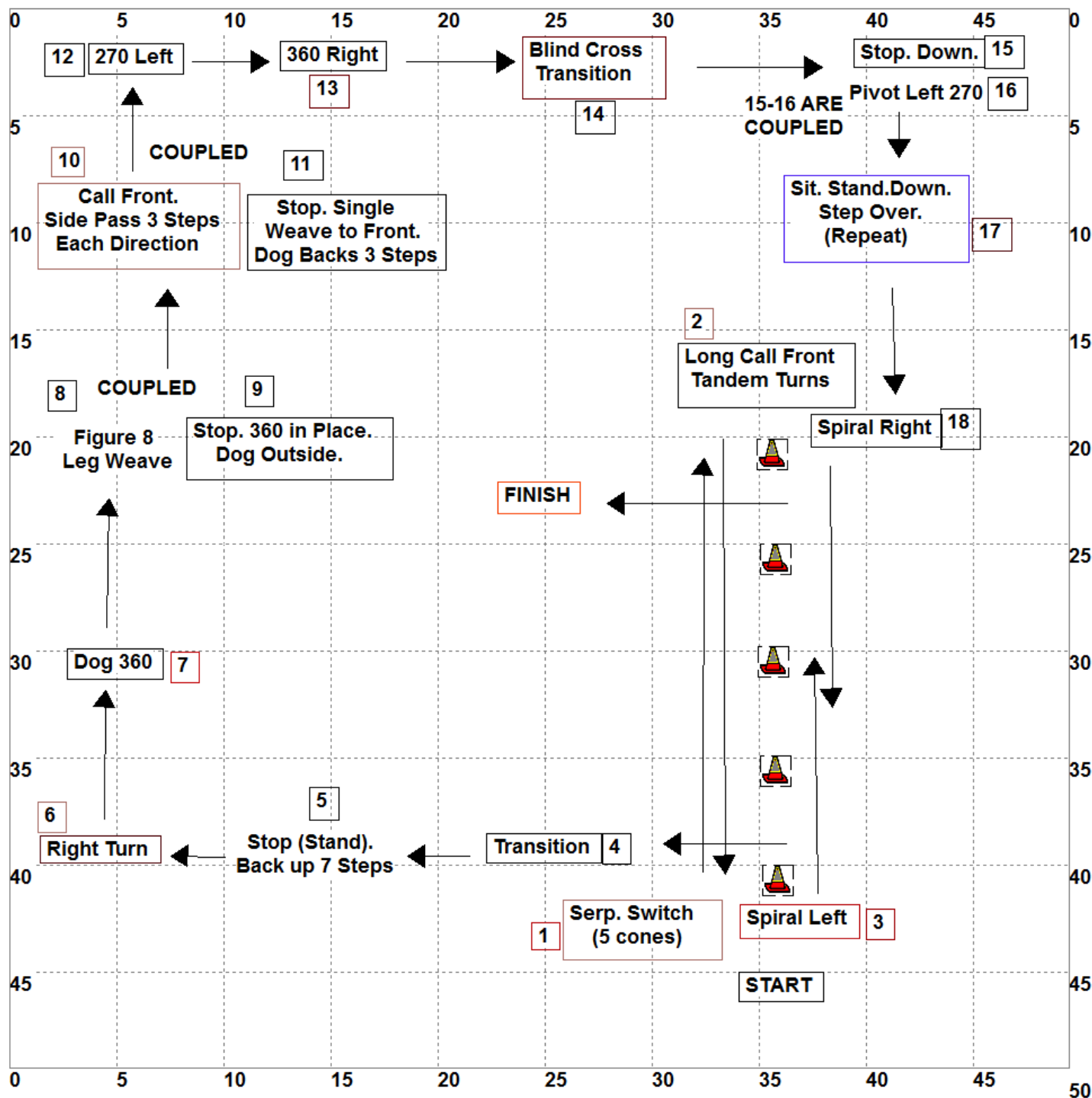
Any questions or problems, just ask. If anything on this course is inaccurate, please let me know.

Thanks! Have fun!  
Jude

START (L1-1)

- |  |            |
|--|------------|
| 1. Stop. Send Over 3 Jumps. Dog Waits.         | (L5-8)     |
| 2. Retrieve Over 3 Jumps                       | (L5-9)     |
| 3. Stop. Send to Target. Down. Recall to Side. | (L2-12)    |
| 4. Single Jump                                 | (L2-9/10)  |
| 5. Rear Cross Transition                       | (L5-4)     |
| 6. Transition 90 Left                          | (L2-5/6)   |
| 7. Send to Target. Sit. Recall to Heel.        | (L2-11)    |
| 8. 360 Left                                    | (L1-16)    |
| 9. 270 Right                                   | (L1-11/12) |
| 10. Stop. Tandem Turns (360) Same Direction    | (L5-12)    |
| 11. 270 Right                                  | (L1-11/12) |
| 12. Stop (Stand). Back Around Handler          | (L5-19)    |
| 13. Right Turn                                 | (L1-3/4)   |
| 14. Figure 8 (2 Jumps)                         | (L4-10)    |
| 15. 180 Right                                  | (L1-7/8)   |
| 16. Transition 90 Right                        | (L2-3/4)   |
| 17. Transition with Single Reverse Weave       | (L5-17)    |

FINISH (L1-2)



Level 5 - Course 2P  
Cyber Rally-O



Cyber Rally-O  
Level V – Course 2P

In the list below, the sign number is next to each sign so you can find it easily if you keep your signs in numerical order.

This ring size is just a sample. Yours may be larger or smaller. The choice is yours.

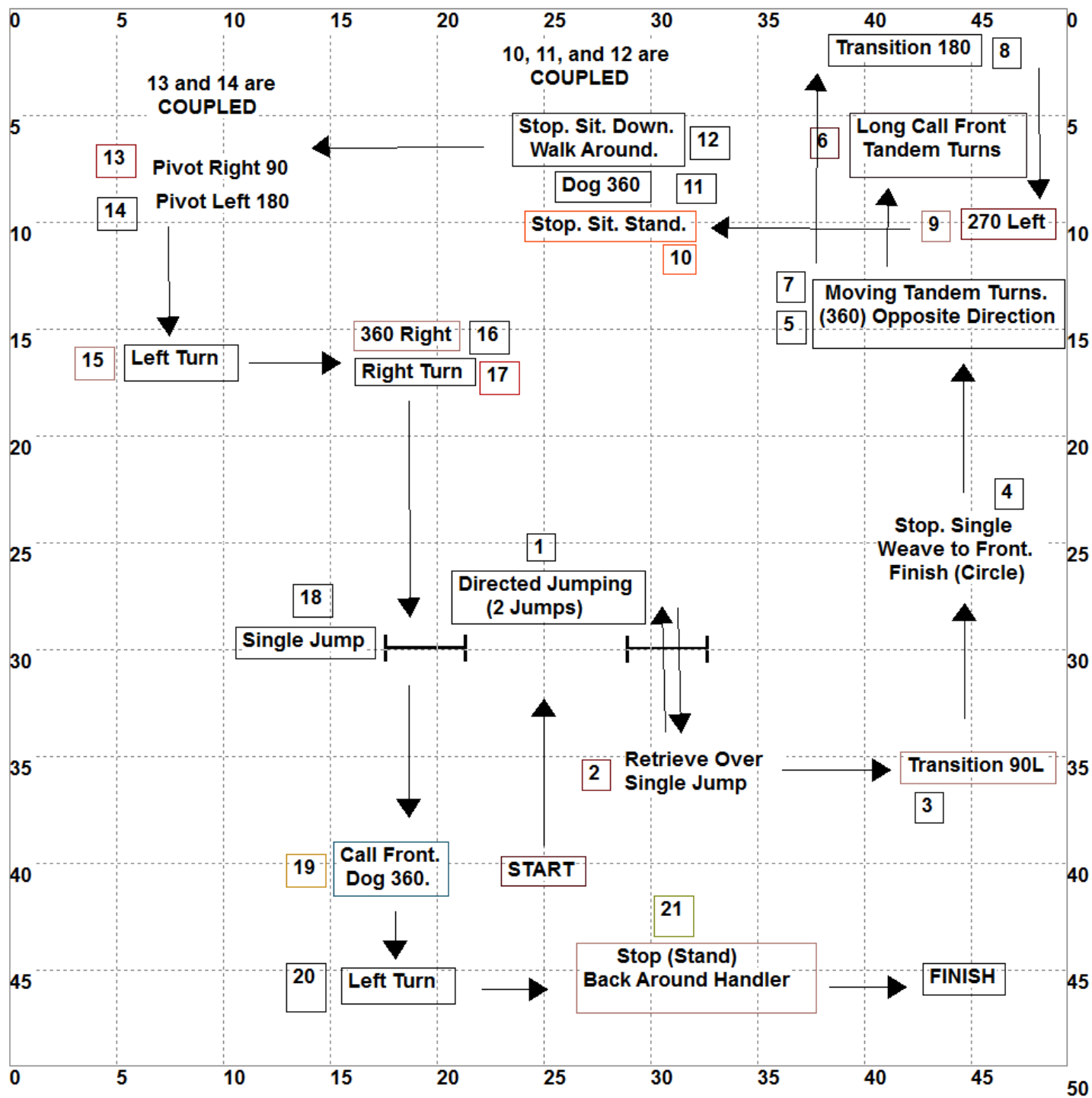
When stations are “coupled” or combined, the end of the first sign is the beginning of the second sign. **On this course, Stations 8 and 9, 10 and 11, and 15 and 16 are coupled (three coupled sets).**

Any questions or problems, just ask. If anything on this course is inaccurate, please let me know.

Thanks! Have fun!  
Jude

- START (L1-1)
- |   |            |         |
|---|------------|---------|
| 1. Serpentine Switch (5 cones)                      |            | (L5-5)  |
| 2. Long Call Front. Tandem Turns. (6-10+ Steps)     |            | (L5-21) |
| 3. Spiral Left                                      | (L1-34)    |         |
| 4. Transition                                       | (L2-1/2)   |         |
| 5. Stop (Stand). Back Up 7 Steps                    |            | (L5-18) |
| 6. Right Turn                                       | (L1-3/4)   |         |
| 7. Dog 360  | (L2-19)    |         |
| 8. Stop. Figure 8 Leg Weave                         |            | (L3-10) |
| 9. Stop. 360 in Place. Dog Outside.                 | (L2-15)    |         |
| 10. Call Front. Side Pass 3 Steps Each Direction    |            | (L4-13) |
| 11. Stop. Single Weave to Front. Dog Backs 3 Steps. |            | (L4-14) |
| 12. 270 Left  | (L1-13/14) |         |
| 13. 360 Right                                       | (L1-15)    |         |
| 14. Blind Cross Transition                          |            | (L4-12) |
| 15. Stop. Down.                                     | (L1-20)    |         |
| 16. Pivot Left 270                                  |            | (L4-19) |
| 17. Sit. Stand. Down. Handler Steps Over. (Repeat)  |            | (L5-25) |
| 18. Spiral Right                                    | (L1-33)    |         |

FINISH (L1-2)



Level 5 - Course 3P  
Cyber Rally-O



Cyber Rally-O  
Level V – Course 3P

In the list below, the sign number is next to each sign so you can find it easily if you keep your signs in numerical order.

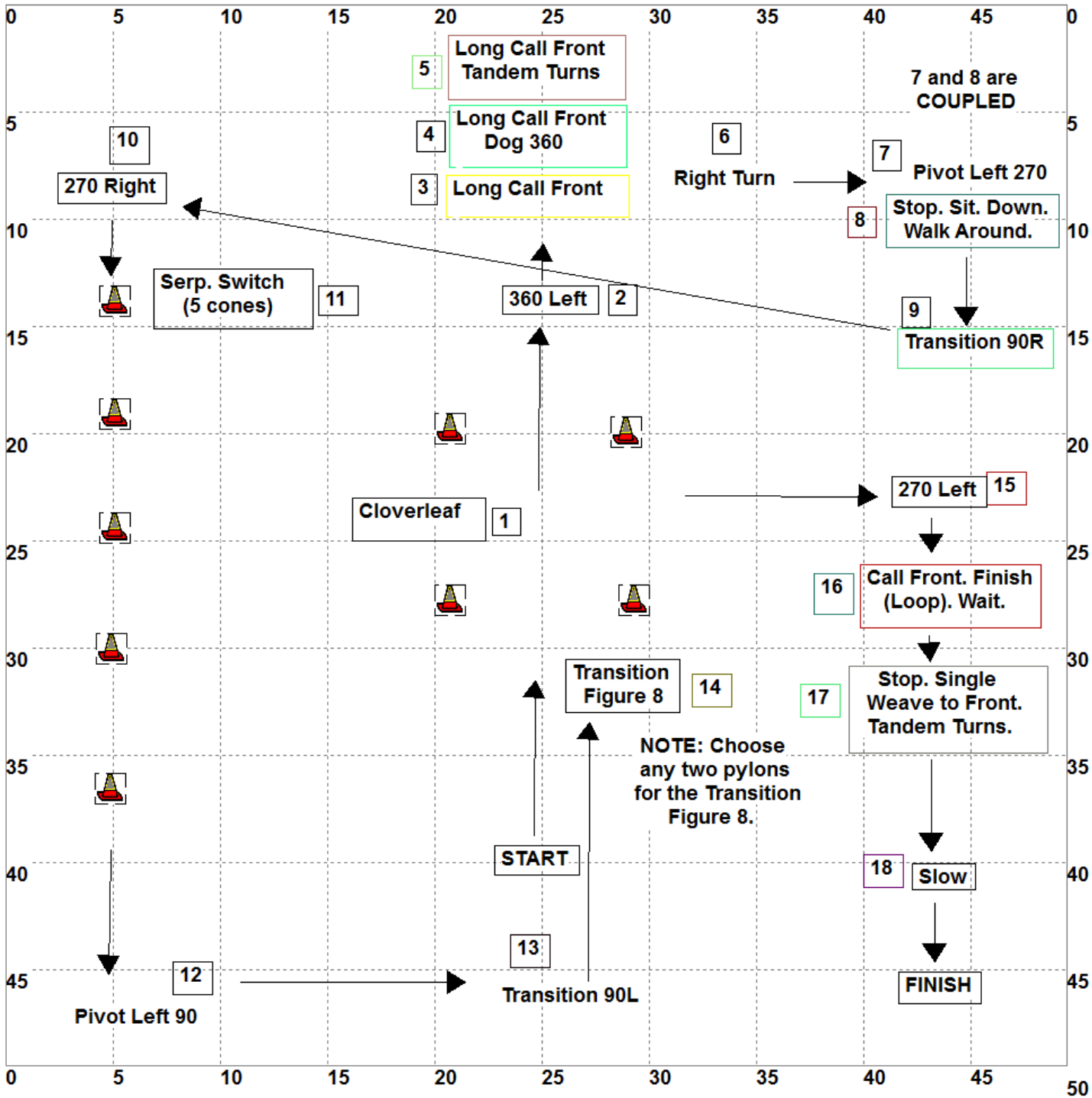
This ring size is just a sample. Yours may be larger or smaller. The choice is yours.

When stations are “coupled” or combined, the end of the first sign is the beginning of the second sign. **On this course, Stations 10, 11, and 12, and Stations 13 and 14 are coupled.**

Any questions or problems, just ask. If anything on this course is inaccurate, please let me know.

Thanks! Have fun!  
Jude

- |  |            |         |
|--|------------|---------|
| START  | (L1-1)     |         |
| 1. Directed Jumping (2 Jumps)                          |            | (L5-10) |
| 2. Retrieve Over Single Jump                           |            | (L3-18) |
| 3. Transition 90 Left                                  | (L2-5/6)   |         |
| 4. Stop. Single Weave to Front. Finish (Circle). Wait. | (L3-11)    |         |
| 5. Moving Tandem Turns (360°) Opposite Directions      |            | (L5-15) |
| 6. Long Call Front. Tandem Turns. (6-10+ Steps)        |            | (L5-21) |
| 7. Moving Tandem Turns (360°) Opposite Directions      |            | (L5-15) |
| 8. Transition 180                                      | (L2-7/8)   |         |
| 9. 270 Left  | (L1-13/14) |         |
| 10. Stop. Sit. Stand                                   | (L2-13)    |         |
| 11. Dog 360  | (L2-19)    |         |
| 12. Stop. Sit. Down. Walk Around                       | (L2-14)    |         |
| 13. Pivot Right 90°                                    |            | (L3-1)  |
| 14. Pivot Left 180°                                    |            | (L3-4)  |
| 15. Left Turn  | (L1-5/6)   |         |
| 16. 360 Right  | (L1-15)    |         |
| 17. Right Turn   | (L1-3/4)   |         |
| 18. Single Jump  | (L2-9/10)  |         |
| 19. Call Front. Dog 360.                               | (L2-20)    |         |
| 20. Left Turn  | (L1-5/6)   |         |
| 21. Stop (Stand). Back Around Handler                  |            | (L5-19) |
| FINISH   | (L1-2)     |         |



**Level 5 - Course 4P  
Cyber Rally-O**



Cyber Rally-O  
Level V – Course 4P

In the list below, the sign number is next to each sign so you can find it easily if you keep your signs in numerical order.

This ring size is just a sample. Yours may be larger or smaller. The choice is yours.

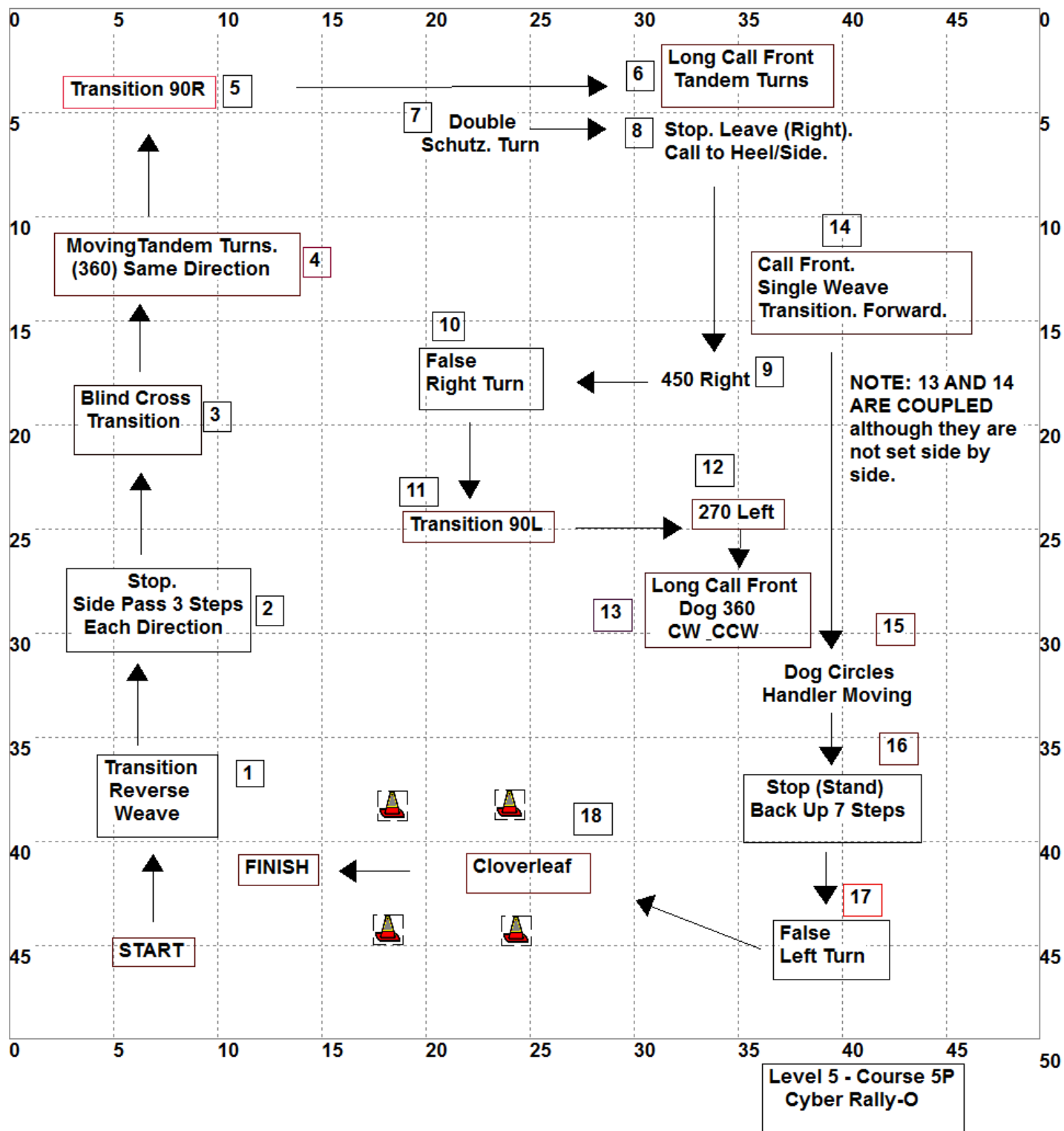
When stations are “coupled” or combined, the end of the first sign is the beginning of the second sign. **On this course, Stations 7 and 8 are coupled.**

Any questions or problems, just ask. If anything on this course is inaccurate, please let me know.

Thanks! Have fun!  
Jude

- START (L1-1)
1. Cloverleaf (Figure 8, Figure 8) (L4-15)
  2. 360 Left (L1-16)
  3. Long Call Front (6 to 10+ Steps) (L3-22)
  4. Long Call Front with Dog 360. (6 to 10+ Steps) (L4-21)
  5. Long Call Front. Tandem Turns. (6 to 10+ Steps) (L5-21)
  6. Right Turn (L1-3/4)
  7. Pivot Left 270 (L4-19)
  8. Stop. Sit. Down. Walk Around. (L2-14)
  9. Transition 90 Right (L2-3/4)
  10. 270 Right (L1-11/12)
  11. Serpentine Switch (5 cones) (L5-5)
  12. Pivot Left 90 (L3-2)
  13. Transition 90 Left (L2-5/6)
  14. Transition Figure 8 (L3-23)
  15. 270 Left (L1-13/14)
  16. Call Front. Finish (Loop). Wait. (L1-26)
  17. Stop. Single Weave to Front. Tandem Turns. (L5-16)
  18. Slow (L1-29)
- FINISH (L1-2)







Cyber Rally-O  
Level V – Course 5P

In the list below, the sign number is next to each sign so you can find it easily if you keep your signs in numerical order.

This ring size is just a sample. Yours may be larger or smaller. The choice is yours.

When stations are “coupled” or combined, the end of the first sign is the beginning of the second sign. **On this course, Stations 13 and 14 are coupled.**

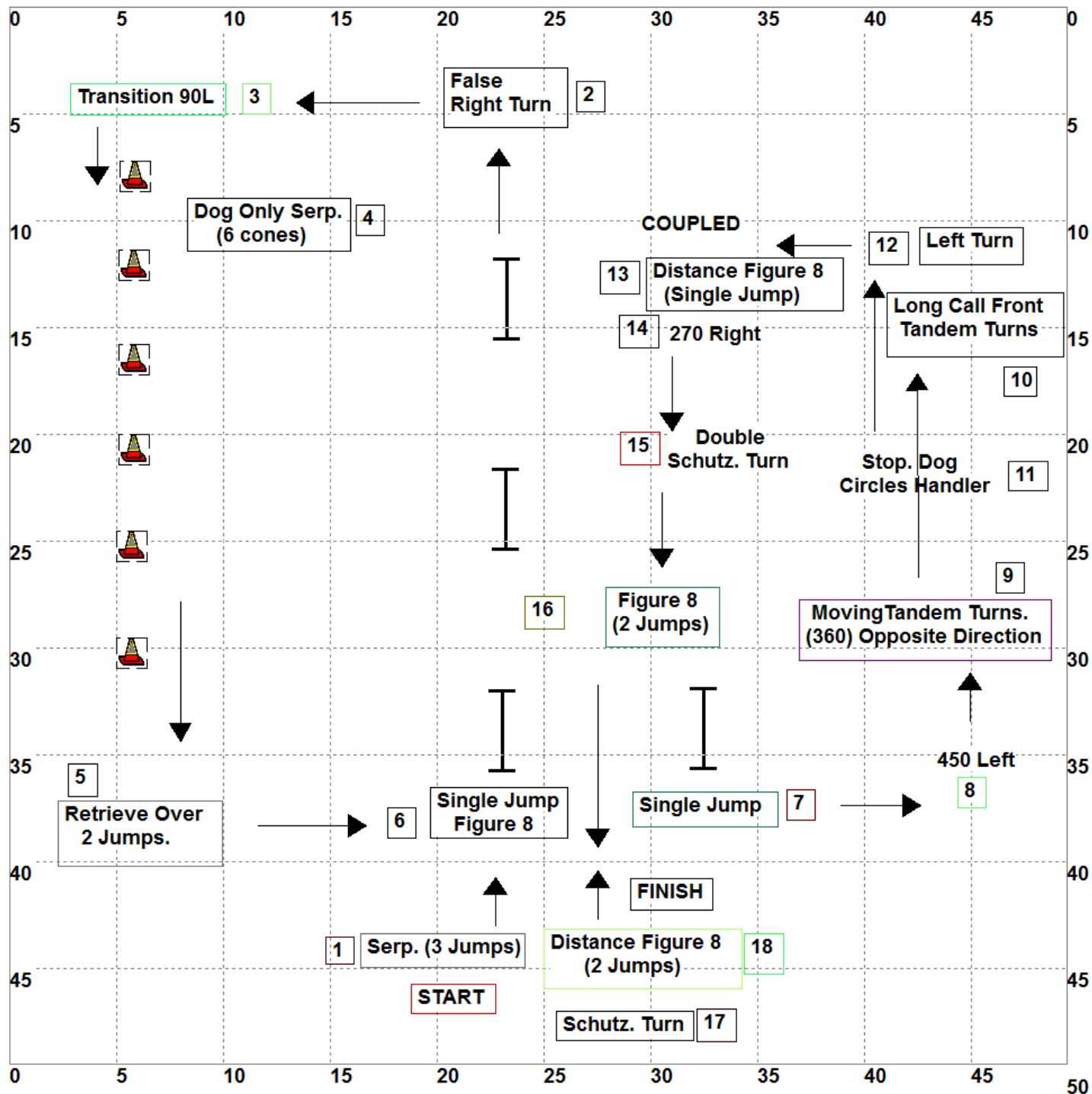
Any questions or problems, just ask. If anything on this course is inaccurate, please let me know.

Thanks! Have fun!  
Jude

START (L1-1)

- |  |            |         |
|--|------------|---------|
| 1. Transition with Single Reverse Weave  |            | (L5-17) |
| 2. Stop. Side Pass 3 Steps Each Direction                                      |            | (L5-11) |
| 3. Blind Cross Transition  |            | (L4-12) |
| 4. Moving Tandem Turns (360°) Same Direction                                   |            | (L5-14) |
| 5. Transition 90 Right   | (L2-3/4)   |         |
| 6. Long Call Front. Tandem Turns (6-10+ Steps)                                 |            | (L5-21) |
| 7. Double Schutzhund Turn  | (L1-41)    |         |
| 8. Stop. Leave Dog (3-5 Steps Right). Call to Heel/Side.                       | (L1-38)    |         |
| 9. 450 Right   | (L1-42)    |         |
| 10. False Right Turn (Right Turn, Come Fore,<br>Handler Switches to Heel/Side) | (L2-24)    |         |
| 11. Transition 90 Left   | (L2-5/6)   |         |
| 12. 270 Left   | (L1-13/14) |         |
| 13. Long Call Front. Dog 360 CW & CCW. (6-10+ Steps)                           |            | (L5-20) |
| 14. Call Front. Single Weave Transition. Forward.                              | (L2-29)    |         |
| 15. Dog Circles Handler While Moving   | (L3-9)     |         |
| 16. Stop (Stand). Back Up 7 Steps  |            | (L5-18) |
| 17. False Left Turn (Left Turn, Come Fore,<br>Handler Switches to Heel/Side)   | (L2-25)    |         |
| 18. Cloverleaf (Figure 8, Figure 8)  |            | (L4-15) |

FINISH (L1-2)



Level 5 - Course 6P  
Cyber Rally-O



Cyber Rally-O  
Level V – Course 6P

In the list below, the sign number is next to each sign so you can find it easily if you keep your signs in numerical order.

This ring size is just a sample. Yours may be larger or smaller. The choice is yours.

When stations are “coupled” or combined, the end of the first sign is the beginning of the second sign. **On this course, Stations 13 and 14 are coupled.**

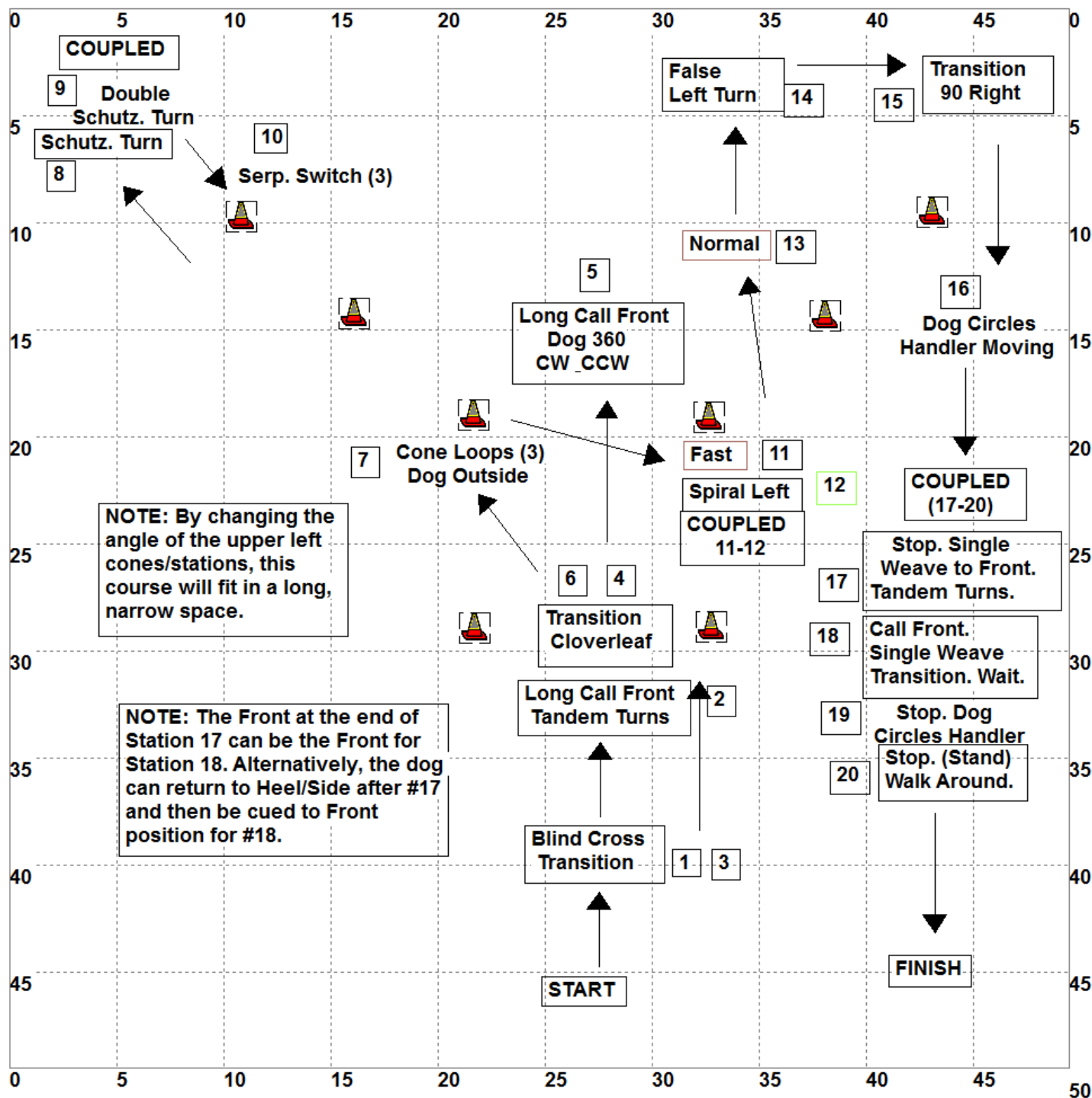
Any questions or problems, just ask. If anything on this course is inaccurate, please let me know.

Thanks! Have fun!  
Jude

START (L1-1)

- |  |            |         |
|--|------------|---------|
| 1. Serpentine (3 Jumps)  |            | (L5-6)  |
| 2. False Right Turn (Right Turn, Come Fore, Handler Switches to Heel/Side) | (L2-24)    |         |
| 3. Transition 90 Left  | (L2-5/6)   |         |
| 4. Dog Only Serpentine (6 cones)   |            | (L4-16) |
| 5. Retrieve Over 2 Jumps   |            | (L4-9)  |
| 6. Single Jump Figure 8  | (L2-21)    |         |
| 7. Single Jump   | (L2-9/10)  |         |
| 8. 450 Left  | (L1-43)    |         |
| 9. Moving Tandem Turns (360°) Opposite Direction                           |            | (L5-15) |
| 10. Long Call Front. Tandem Turns (6-10+ Steps)                            |            | (L5-21) |
| 11. Stop. Dog Circles Handler  |            | (L3-8)  |
| 12. Left Turn  | (L1-5/6)   |         |
| 13. Distance Figure 8 (Single Jump)  |            | (L5-23) |
| 14. 270 Right  | (L1-11/12) |         |
| 15. Double Schutzhund Turn   | (L1-41)    |         |
| 16. Figure 8 (2 Jumps)   |            | (L4-10) |
| 17. Schutzhund Turn  | (L1-17/18) |         |
| 18. Distance Figure 8 (2 Jumps)  |            | (L5-24) |

FINISH (L1-2)



Level 5 - Course 7P  
Cyber Rally-O



Cyber Rally-O  
Level V – Course 7P

In the list below, the sign number is next to each sign so you can find it easily if you keep your signs in numerical order.

This ring size is just a sample. Yours may be larger or smaller. The choice is yours.

When stations are “coupled” or combined, the end of the first sign is the beginning of the second sign. **On this course Stations 8 and 9; 11 and 12; and 17, 18, 19, and 20 are coupled (three sets of coupled signed).**

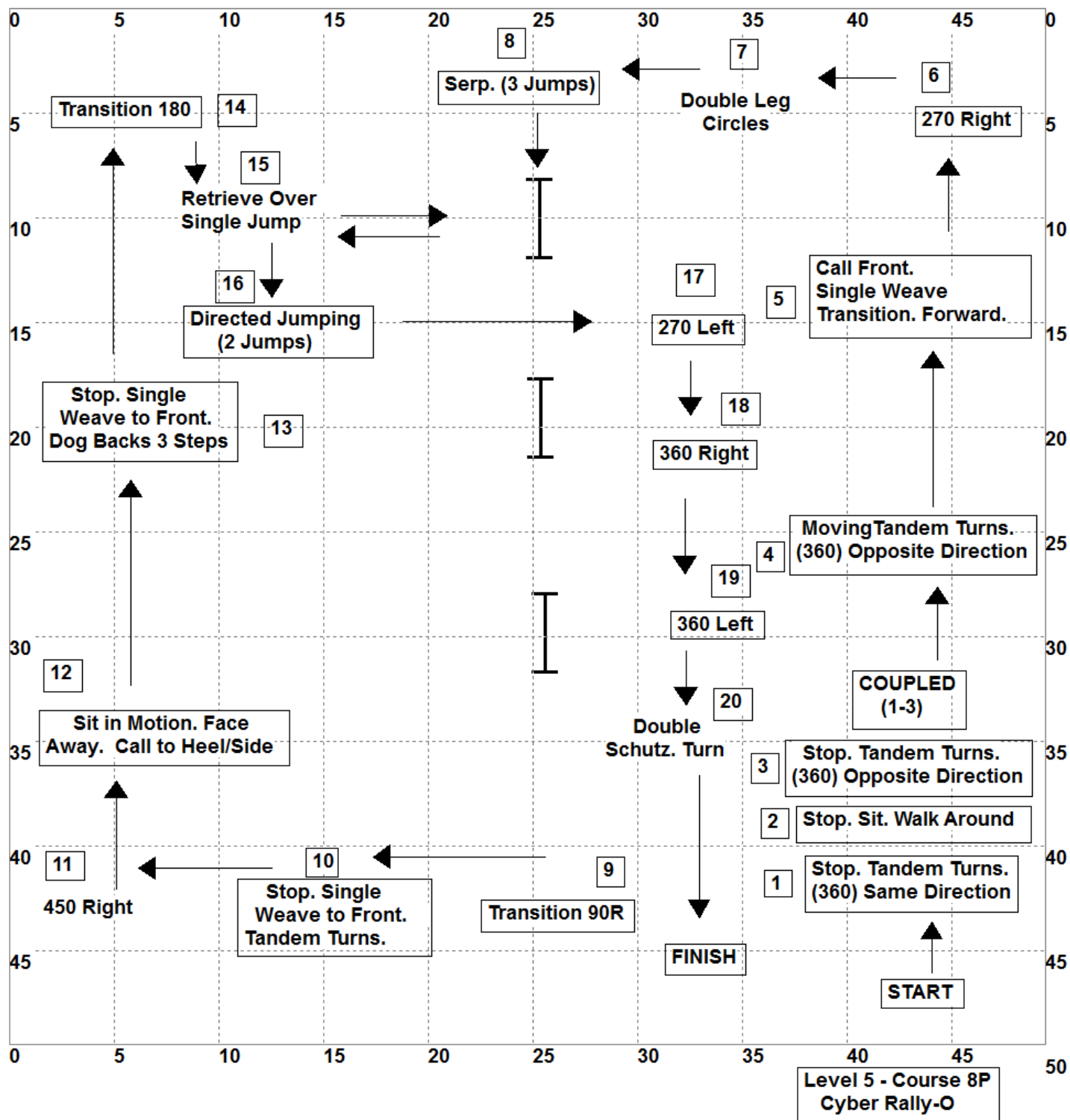
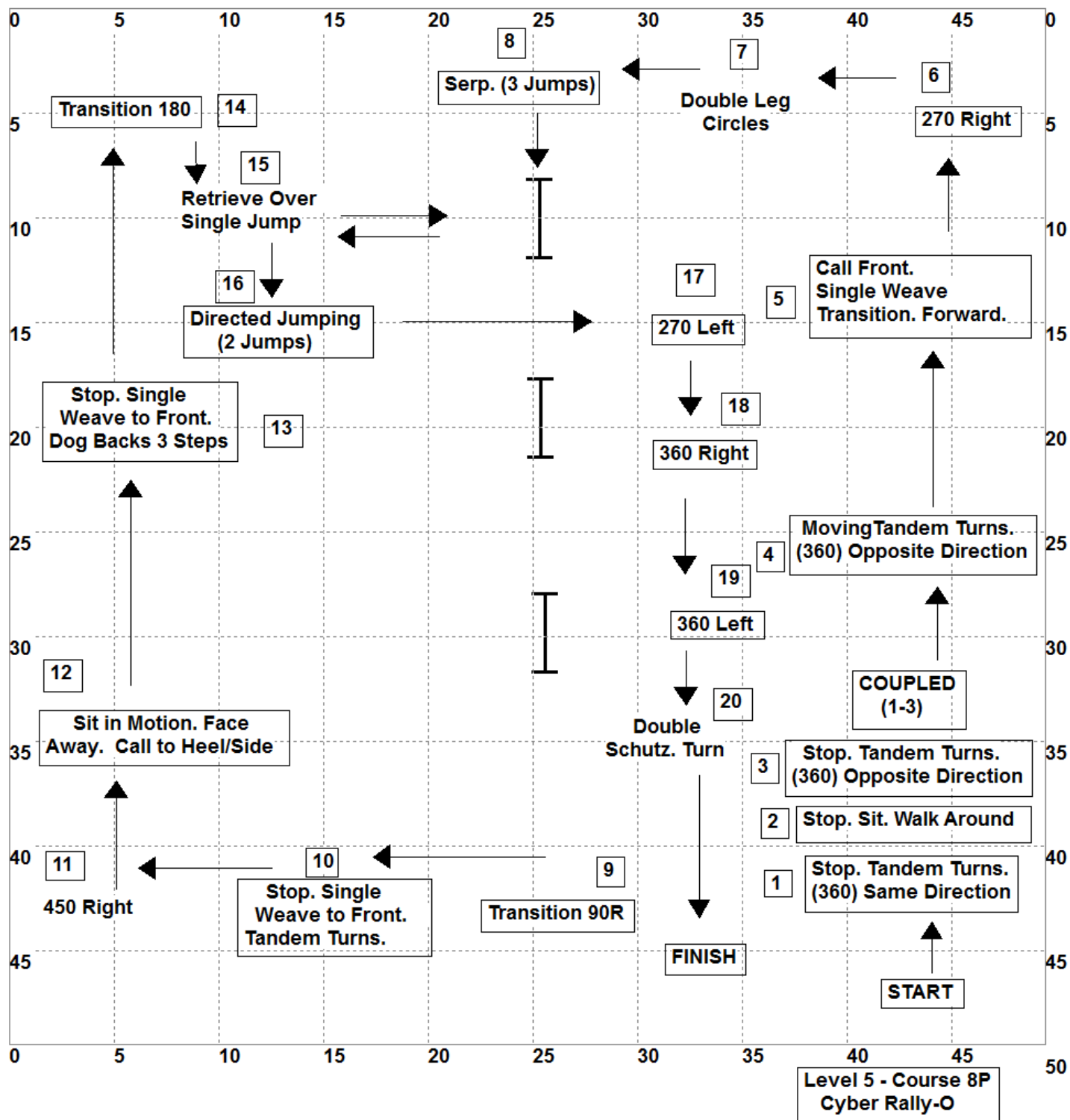
Any questions or problems, just ask. If anything on this course is inaccurate, please let me know.

Thanks! Have fun!  
Jude

START (L1-1)

- |  |            |          |
|--|------------|----------|
| 1. Blind Cross Transition  |            | (L4-12)  |
| 2. Long Call Front. Tandem Turns. (6-10+ Steps)                              |            | (L5-21)  |
| 3. Blind Cross Transition  |            | (L4-12)  |
| 4. Transition Cloverleaf (Figure 8, Figure 8)                                |            | (L5-22)  |
| 5. Long Call Front. Dog 360 CW & CCW (6-10+ Steps)                           |            | (L5-20)  |
| 6. Transition Cloverleaf (Figure 8, Figure 8)                                |            | (L5-22)  |
| 7. Cone Loops (3) Dog Outside  |            | (L3-19)  |
| 8. Schutzhund Turn   | (L1-17/18) |          |
| 9. Double Schutzhund Turn  | (L1-41)    |          |
| 10. Serpentine Switch (3 Cones)  |            | (L3-7)   |
| 11. Fast   | (L1-30)    |          |
| 12. Spiral Left  | (L1-34)    |          |
| 13. Normal   | (L1-31/32) |          |
| 14. False Left Turn (Left Turn, Come Fore,<br>Handler Switches to Heel/Side) |            | (L2-25)  |
| 15. Transition 90 Right  |            | (L2-3/4) |
| 16. Dog Circles Handler While Moving   |            | (L3-9)   |
| 17. Stop. Single Weave to Front. Tandem Turns.                               |            | (L5-16)  |
| 18. Call Front. Single Weave Transition. Wait.                               | (L2-28)    |          |
| 19. Stop. Dog Circles Handler.   |            | (L3-8)   |
| 20. Stop (Stand). Walk Around.   | (L1-24)    |          |

FINISH (L1-2)





Cyber Rally-O  
Level V – Course 8P

In the list below, the sign number is next to each sign so you can find it easily if you keep your signs in numerical order.

This ring size is just a sample. Yours may be larger or smaller. The choice is yours.

When stations are “coupled” or combined, the end of the first sign is the beginning of the second sign. **On this course, Stations 1-3 are coupled.**

Any questions or problems, just ask. If anything on this course is inaccurate, please let me know.

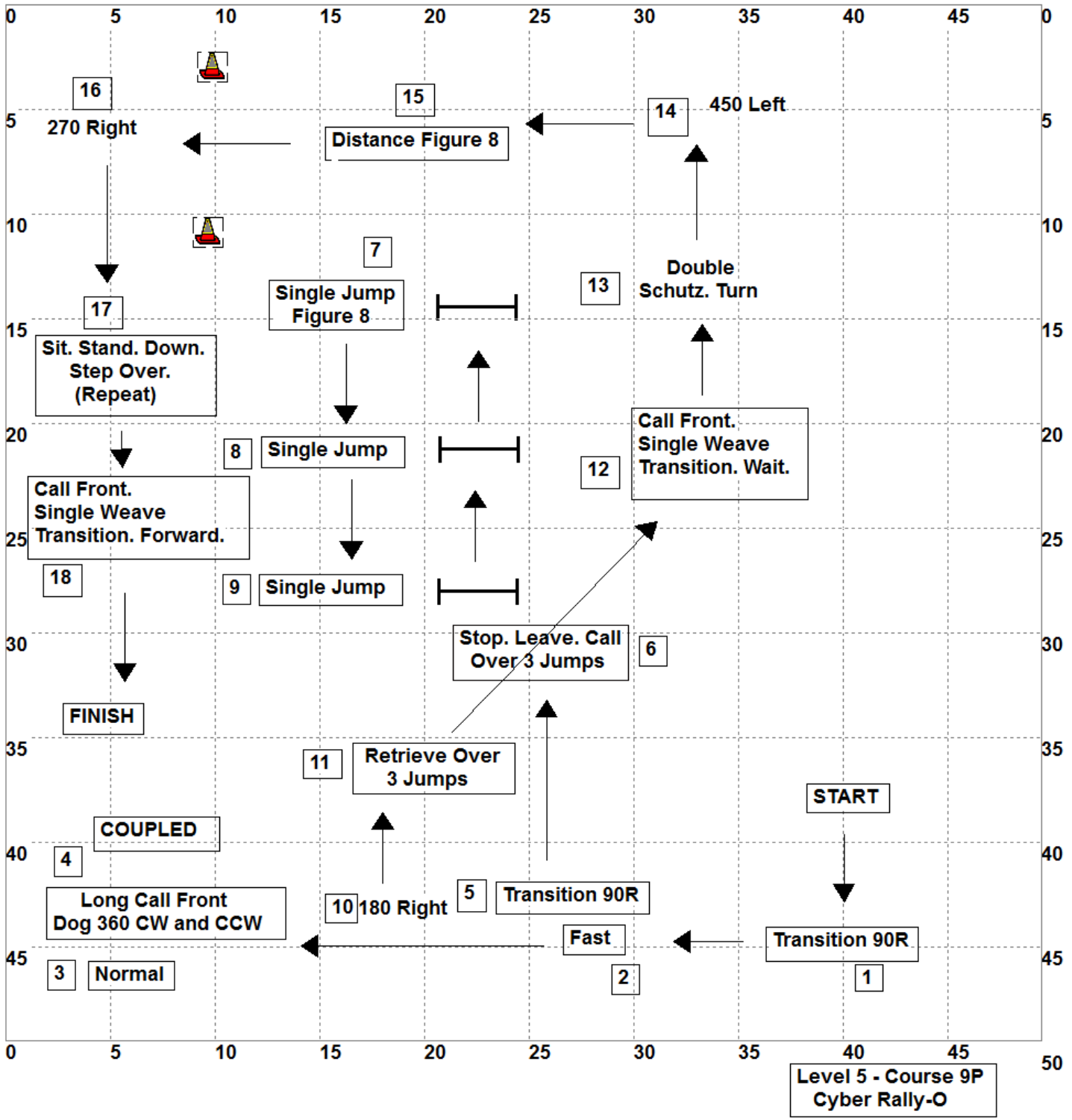
Thanks! Have fun!  
Jude

START (L1-1)

- |  |            |         |
|--|------------|---------|
| 1. Stop. Tandem Turns (360). Same Direction                  |            | (L5-12) |
| 2. Stop. Sit. Walk Around                                    | (L1-22)    |         |
| 3. Stop. Tandem Turns (360) Opposite Direction               |            | (L5-13) |
| 4. Moving Tandem Turns (360°) Opposite Direction             |            | (L5-15) |
| 5. Call Front. Single Weave Transition. Forward              | (L2-29)    |         |
| 6. 270 Right   | (L1-11/12) |         |
| 7. Double Leg Circles (LL, RR or RR, LL)                     |            | (L4-22) |
| 8. Serpentine (3 Jumps)                                      |            | (L5-6)  |
| 9. Transition 90 Right                                       | (L2-3/4)   |         |
| 10. Stop. Single Weave to Front. Tandem Turns.               |            | (L5-16) |
| 11. 450 Right (360 Right + Right Turn)                       | (L1-42)    |         |
| 12. Sit in Motion (5-10 Steps). Face Away. Call to Heel/Side |            | (L5-1)  |
| 13. Stop. Single Weave to Front. Dog Backs 3 Steps.          |            | (L4-14) |
| 14. Transition 180   | (L2-7/8)   |         |
| 15. Retrieve Over Single Jump                                | (L3-18)    |         |
| 16. Directed Jumping (2 Jumps)                               |            | (L5-10) |
| 17. 270 Left   | (L1-13/14) |         |
| 18. 360 Right  | (L1-15)    |         |
| 19. 360 Left   | (L1-16)    |         |
| 20. Double Schutzhund Turn                                   | (L1-41)    |         |

FINISH (L1-2)







Cyber Rally-O  
Level V – Course 9P

In the list below, the sign number is next to each sign so you can find it easily if you keep your signs in numerical order.

This ring size is just a sample. Yours may be larger or smaller. The choice is yours.

When stations are “coupled” or combined, the end of the first sign is the beginning of the second sign. **On this course, Stations 3 and 4 are coupled.**

Any questions or problems, just ask. If anything on this course is inaccurate, please let me know.

Thanks! Have fun!  
Jude

START (L1-1)

- |   |             |         |
|---|-------------|---------|
| 1. Transition 90 Right                              | (L2-3/4)    |         |
| 2. Fast   | (L1-30)     |         |
| 3. Normal   | (L1--31/32) |         |
| 4. Long Call Front. Dog 360 CW & CCW (6-10 steps)   |             | (L5-20) |
| 5. Transition 90 Right                              | (L2-3/4)    |         |
| 6. Stop. Leave Dog. Call Dog Over 3 Jumps           |             | (L5-7)  |
| 7. Single Jump Figure 8                             | (L2-21)     |         |
| 8. Single Jump                                      | (L2-9/10)   |         |
| 9. Single Jump                                      | (L2-9/10)   |         |
| 10. 180 Right                                       | (L1-7/8)    |         |
| 11. Retrieve Over 3 Jumps                           |             | (L5-9)  |
| 12. Call Front. Single Weave Transition. Wait.      | (L2-28)     |         |
| 13. Double Schutzhund Turn                          | (L1-41)     |         |
| 14. 450 Left  | (L1-43)     |         |
| 15. Distance Figure 8                               |             | (L4-23) |
| 16. 270 Right                                       | (L1-11/12)  |         |
| 17. Sit. Stand. Down. Handler Steps Over. (Repeat). |             | (L5-25) |
| 18. Call Front. Single Weave Transition. Forward.   | (L2-29)     |         |

FINISH (L1-2)